

NAA60 RABBIT PAB

Cat.#: S218205

Product Name: Anti-NAA60 Rabbit Polyclonal Antibody

Synonyms: HAT4; NatF; NAT15; hNaa60

UNIPROT ID: Q9H7X0 (Gene Accession - BC011267)

Background: This gene encodes an enzyme that localizes to the Golgi apparatus, where it transfers an acetyl group to the N-terminus of free proteins. This enzyme acts on histones, and its activity is important for chromatin assembly and chromosome integrity. Alternative splicing and the use of alternative promoters results in multiple transcript variants. The upstream promoter is located in a differentially methylated region (DMR) and undergoes imprinting; transcript variants originating from this position are expressed from the maternal allele. [provided by RefSeq, Nov 2015]

Immunogen: Fusion protein of human NAA60

Applications: ELISA, IHC

Recommended Dilutions: IHC: 100-200; ELISA: 5000-10000

Host Species: Rabbit

Clonality: Rabbit Polyclonal

Isotype: Immunogen-specific rabbit IgG

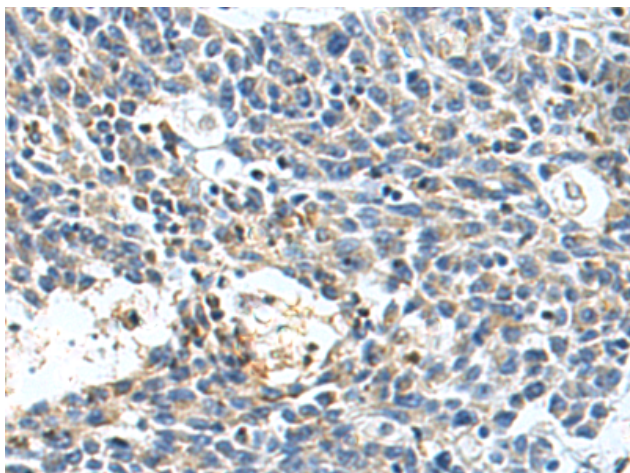
Purification: Antigen affinity purification

Species Reactivity: Human, Mouse, Rat

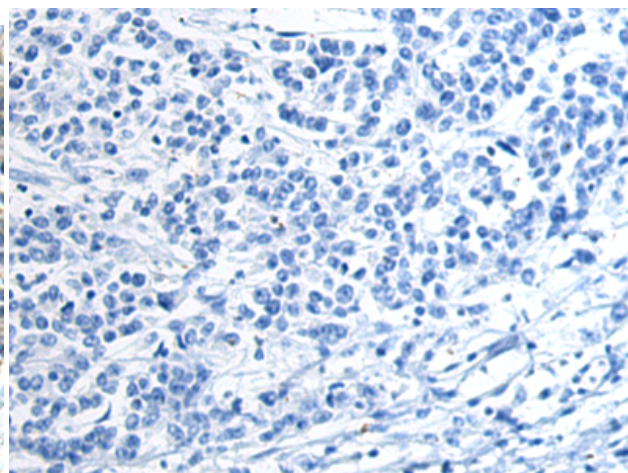
Constituents: PBS (without Mg²⁺ and Ca²⁺), pH 7.4, 150 mM NaCl, 0.05% Sodium Azide and 40% glycerol

Research Areas: Cell Biology

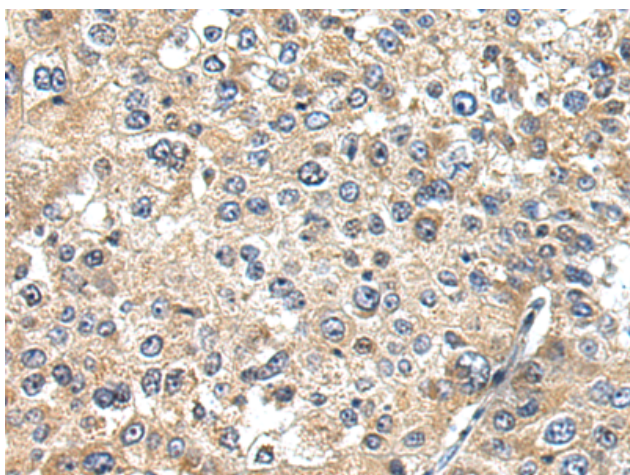
Storage & Shipping: Store at -20°C. Avoid repeated freezing and thawing



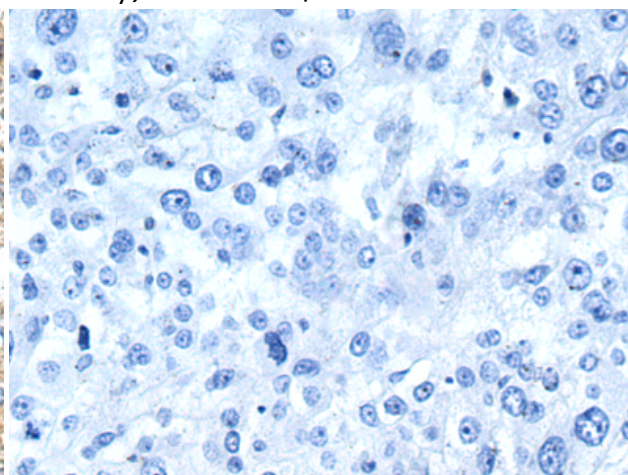
Immunohistochemistry analysis of paraffin embedded Human colorectal cancer tissue using 218205(NAA60 Antibody) at a dilution of 1/100(Cytoplasm).



In comparison with the IHC on the left, the same paraffin-embedded Human colorectal cancer tissue is first treated with the fusion protein and then with 218205(Anti-NAA60 Antibody) at dilution 1/100.



The image on the left is immunohistochemistry of paraffin-embedded Human liver cancer tissue using 218205(Anti-NAA60 Antibody) at a dilution of 1/100.



In comparison with the IHC on the left, the same paraffin-embedded Human liver cancer tissue is first treated with fusion protein and then with D223944(Anti-NAA60 Antibody) at dilution 1/100.