

MYOMESIN 2 RABBIT PAB

Cat.#: N225458

Product Name: Anti-Myomesin 2 Rabbit pAb

Synonyms: TTNAP

UNIPROT ID: P54296

Background: Major component of the vertebrate myofibrillar M band. Binds myosin, titin, and light meromyosin. This binding is dose dependent.

Immunogen: The antiserum was produced against synthesized peptide derived from human MYOM2. AA range:612-661

Applications: WB,ELISA

Recommended Dilutions: WB: 1/500-1/1000 ELISA: 1/10000

Host Species: Rabbit

Clonality: Rabbit Polyclonal

Clone ID: -

MW: Calculated MW: 165 kDa; Observed MW: 165 kDa

Isotype: IgG

Purification: Affinity Chromatography

Species Reactivity: Human,Mouse,Monkey

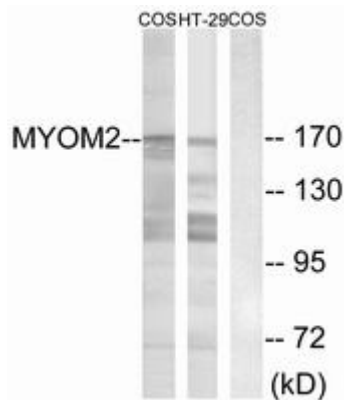
Conjugation: Unconjugated

Modification: Unmodified

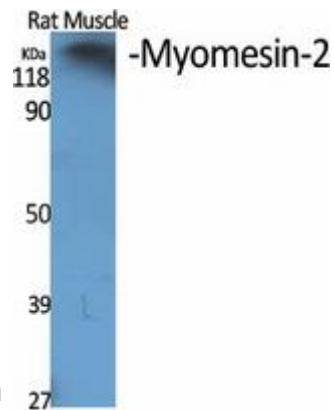
Constituents: PBS (without Mg²⁺ and Ca²⁺), pH 7.3 containing 50% glycerol, 0.5% BSA and 0.02% sodium azide

Research Areas: Signal Transduction

Storage & Shipping: Store at -20°C. Avoid repeated freezing and thawing



Western blot analysis of Myomesin 2 in COS7 and HT-29 lysates using MYOM2 antibody. The lane on the right is blocked with the synthesized peptide.



Western blot analysis of Myomesin 2 in various lysates using Myomesin 2 antibody.



Western blot analysis of Myomesin 2 in HT-29 lysates using Myomesin2 antibody.