

MYLIP RABBIT PAB

Cat.#: S219392

Product Name: Anti-MYLIP Rabbit Polyclonal Antibody

Synonyms: MIR; IDOL

UNIPROT ID: Q8WY64 (Gene Accession - BC002860)

Background: The ERM protein family members ezrin, radixin, and moesin are cytoskeletal effector proteins linking actin to membrane-bound proteins at the cell surface. Myosin regulatory light chain interacting protein (MYLIP) is a novel ERM-like protein that interacts with myosin regulatory light chain and inhibits neurite outgrowth.

Immunogen: Fusion protein of human MYLIP

Applications: ELISA, WB, IHC

Recommended Dilutions: IHC: 150-300;WB: 1000-5000;ELISA: 5000-10000

Host Species: Rabbit

Clonality: Rabbit Polyclonal

Isotype: Immunogen-specific rabbit IgG

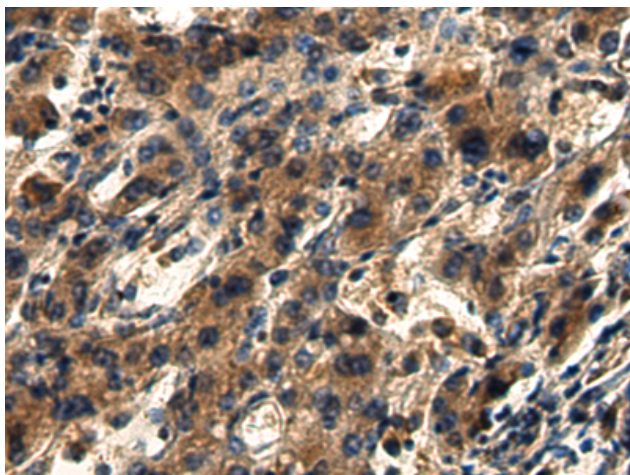
Purification: Antigen affinity purification

Species Reactivity: Human, Mouse, Rat

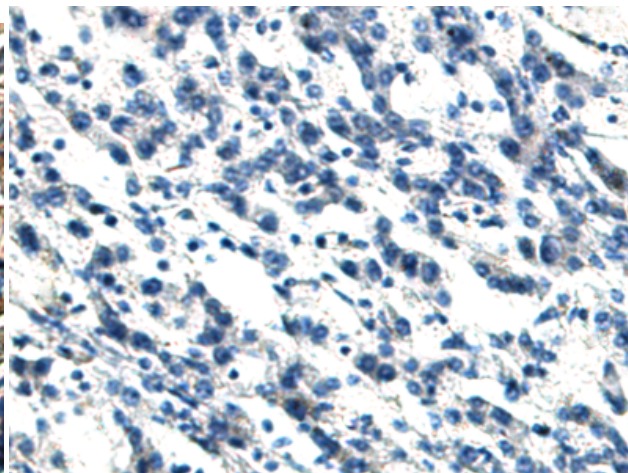
Constituents: PBS (without Mg²⁺ and Ca²⁺), pH 7.4, 150 mM NaCl, 0.05% Sodium Azide and 40% glycerol

Research Areas: Signal Transduction, Epigenetics and Nuclear Signaling, Metabolism, Cell Biology, Cardiovascular

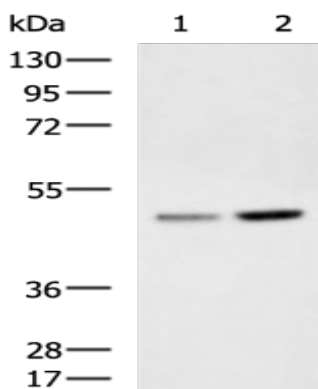
Storage & Shipping: Store at -20°C. Avoid repeated freezing and thawing



Immunohistochemistry analysis of paraffin embedded Human liver cancer tissue using 219392(MYLIP Antibody) at a dilution of 1/140(Cytoplasm).



In comparison with the IHC on the left, the same paraffin-embedded Human liver cancer tissue is first treated with the fusion protein and then with 219392(Anti-MYLIP Antibody) at dilution 1/140.



Gel: 8%SDS-PAGE, Lysate: 40 μ g;
Lane 1-2: HeLa and Jurkat cell lysates;
Primary antibody: 219392(MYLIP Antibody) at dilution 1/1000;
Secondary antibody: HRP-conjugated Goat anti rabbit IgG at 1/5000 dilution;
Exposure time: 5 minutes