

## MYL6B RABBIT PAB

**Cat.#:** S219550

**Product Name:** Anti-MYL6B Rabbit Polyclonal Antibody

**Synonyms:** MLC1SA

**UNIPROT ID:** P14649 (Gene Accession - BC014400 )

**Background:** Myosin is a hexameric ATPase cellular motor protein. It is composed of two heavy chains, two nonphosphorylatable alkali light chains, and two phosphorylatable regulatory light chains. This gene encodes a myosin alkali light chain expressed in both slow-twitch skeletal muscle and in nonmuscle tissue. Alternative splicing results in multiple transcript variants.

**Immunogen:** Fusion protein of human MYL6B

**Applications:** ELISA, IHC

**Recommended Dilutions:** IHC: 50-100; ELISA: 5000-10000

**Host Species:** Rabbit

**Clonality:** Rabbit Polyclonal

**Isotype:** Immunogen-specific rabbit IgG

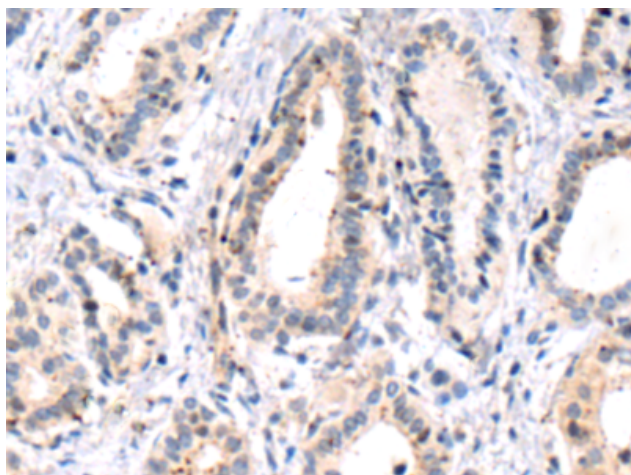
**Purification:** Antigen affinity purification

**Species Reactivity:** Human, Mouse

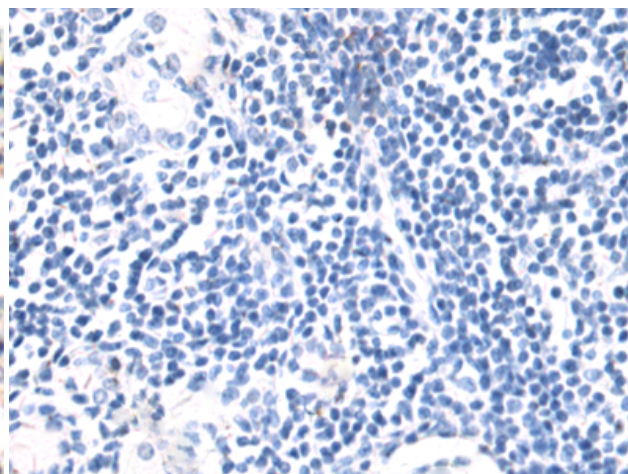
**Constituents:** PBS (without Mg<sup>2+</sup> and Ca<sup>2+</sup>), pH 7.4, 150 mM NaCl, 0.05% Sodium Azide and 40% glycerol

**Research Areas:** Signal Transduction

**Storage & Shipping:** Store at -20°C. Avoid repeated freezing and thawing



Immunohistochemistry analysis of paraffin embedded Human thyroid cancer tissue using 219550(MYL6B Antibody) at a dilution of 1/60(Cytoplasm).



In comparison with the IHC on the left, the same paraffin-embedded Human thyroid cancer tissue is first treated with the fusion protein and then with 219550(Anti-MYL6B Antibody) at dilution 1/60.