

MYL2 RABBIT MAB

Cat.#: N262566

Product Name: Anti-MYL2 Rabbit Monoclonal Antibody

Synonyms: Myosin regulatory light chain 2; ventricular/cardiac muscle isoform; MLC-2; MLC-2v

UNIPROT ID: P10916

Background: Myosin is composed of six polypeptide chains: two identical heavy chains and two pairs of light chains. Myosin light chain 2 (MLC2), also known as myosin regulatory light chain (MRLC), RLC, or LC20, has many isoforms depending on its distribution. In smooth muscle, MLC2 is phosphorylated at Thr18 and Ser19 by myosin light chain kinase (MLCK) in a Ca²⁺/calmodulin-dependent manner.

Immunogen: A synthetic peptide of human Myosin Light Chain 2

Applications: WB,IHC-P,IP

Recommended Dilutions: WB: 1/500-1/1000 IHC: 1/50-1/100 IP: 1/20

Host Species: Rabbit

Clonality: Rabbit Monoclonal

Clone ID: R07-7C5

MW: Calculated MW: 19 kDa; Observed MW: 19 kDa

Isotype: IgG

Purification: Affinity Purified

Species Reactivity: Mouse,Rat

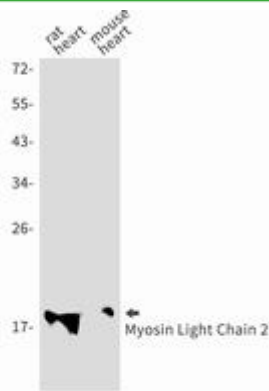
Conjugation: Unconjugated

Modification: Unmodified

Constituents: PBS (without Mg²⁺ and Ca²⁺), pH 7.3 containing 50% glycerol, 0.5% BSA and 0.02% sodium azide

Research Areas: Signal Transduction

Storage & Shipping: Store at -20°C. Avoid repeated freezing and thawing



Western blot analysis of Myosin Light Chain 2 in rat heart, mouse heart lysates using MYL2 antibody.