

## MYL12B RABBIT PAB

**Cat.#:** S221530

**Product Name:** Anti-MYL12B Rabbit Polyclonal Antibody

**Synonyms:** MLC-B; MRLC2

**UNIPROT ID:** O14950 (Gene Accession - NP\_291024 )

**Background:** The activity of nonmuscle myosin II is regulated by phosphorylation of a regulatory light chain, such as MRLC2. This phosphorylation results in higher MgATPase activity and the assembly of myosin II filaments.

**Immunogen:** Synthetic peptide of human MYL12B

**Applications:** ELISA, WB, IHC

**Recommended Dilutions:** IHC: 50-100;WB: 500-2000;ELISA: 2000-5000

**Host Species:** Rabbit

**Clonality:** Rabbit Polyclonal

**Isotype:** Immunogen-specific rabbit IgG

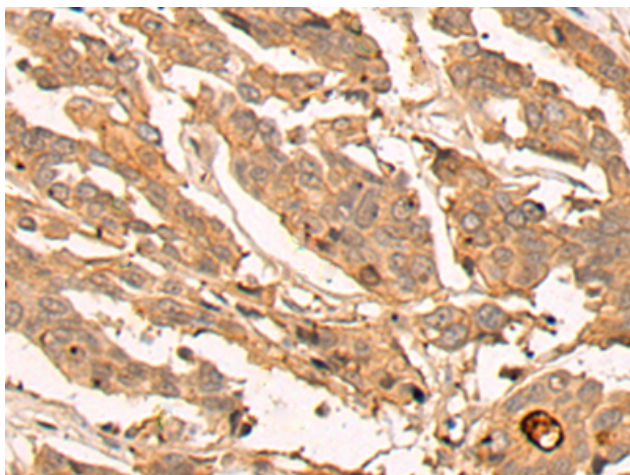
**Purification:** Antigen affinity purification

**Species Reactivity:** Human, Mouse, Rat

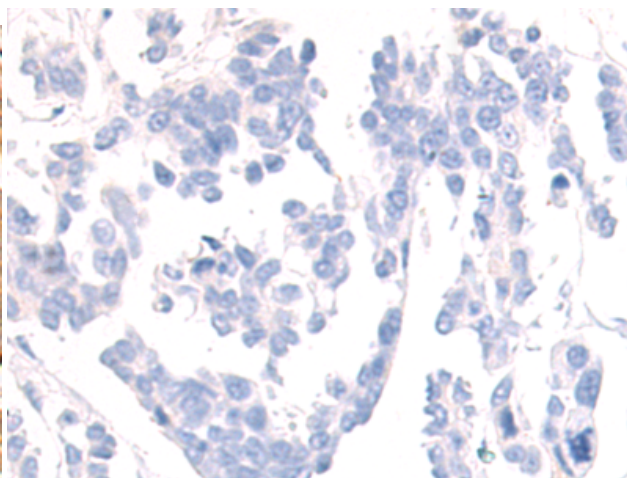
**Constituents:** PBS (without Mg<sup>2+</sup> and Ca<sup>2+</sup>), pH 7.4, 150 mM NaCl, 0.05% Sodium Azide and 40% glycerol

**Research Areas:** Signal Transduction

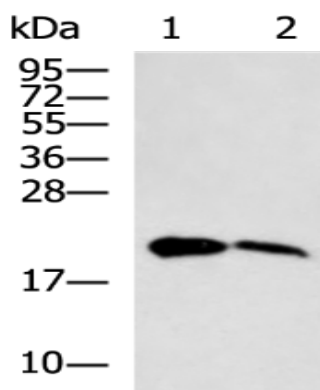
**Storage & Shipping:** Store at -20°C. Avoid repeated freezing and thawing



Immunohistochemistry analysis of paraffin embedded Human colorectal cancer tissue using 221530(MYL12B Antibody) at a dilution of 1/25(Cytoplasm).



In comparison with the IHC on the left, the same paraffin-embedded Human colorectal cancer tissue is first treated with the synthetic peptide and then with 221530(Anti-MYL12B Antibody) at dilution 1/25.



Gel: 12%SDS-PAGE, Lysate: 40 µg;  
 Lane 1-2: Human urinary bladder tissue,  
 Mouse urinary bladder tissue lysates;  
 Primary antibody: 221530(MYL12B Antibody) at  
 dilution 1/500;  
 Secondary antibody: HRP-conjugated Goat  
 anti rabbit IgG at 1/5000 dilution;  
 Exposure time: 1 minute