

## MYH6/7 RABBIT PAB

**Cat.#:** N225087

**Product Name:** Anti-MYH6/7 Rabbit pAb

**Synonyms:** Myosin heavy chain 6; Myosin heavy chain; cardiac muscle alpha isoform; MyHC-alpha; Myosin heavy chain 7; MyHC-slow; MyHC-beta

**UNIPROT ID:** P13533/P12883

**Background:** Muscle contraction.

**Immunogen:** Synthetic peptide from human protein at AA range: 1871-1920

**Applications:** IHC-P,ELISA

**Recommended Dilutions:** IHC: 1/50-1/100 ELISA: 1/10000

**Host Species:** Rabbit

**Clonality:** Rabbit Polyclonal

**Clone ID:** -

**MW:** -

**Isotype:** IgG

**Purification:** Affinity Purified

**Species Reactivity:** Human,Mouse,Rat

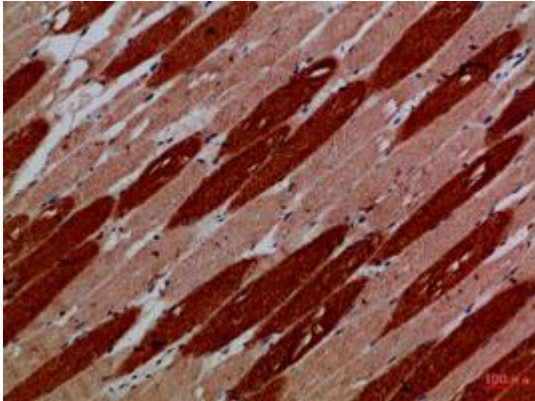
**Conjugation:** Unconjugated

**Modification:** Unmodified

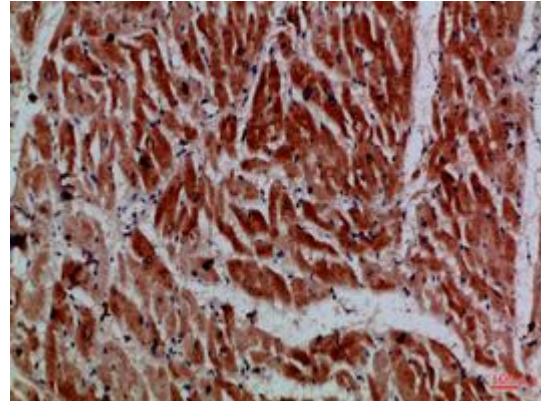
**Constituents:** PBS (without Mg<sup>2+</sup> and Ca<sup>2+</sup>), pH 7.3 containing 50% glycerol, 0.5% BSA and 0.02% sodium azide

**Research Areas:** Signal Transduction

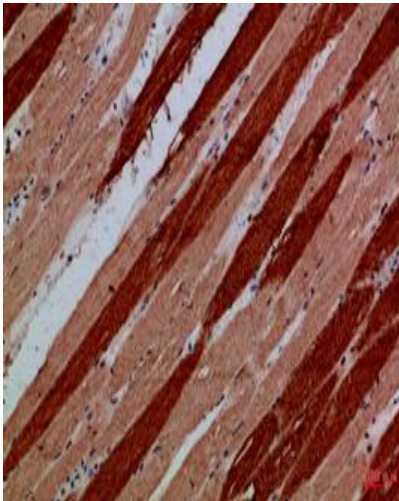
**Storage & Shipping:** Store at -20°C. Avoid repeated freezing and thawing



Immunohistochemical analysis of paraffin-embedded Human tonsils using MYH6/7 antibody. High-pressure and temperature Sodium Citrate pH 6.0 was used for antigen retrieval.



Immunohistochemistry analysis of paraffin-embedded Human heart using MYH6/7 antibody. High-pressure and temperature Sodium Citrate pH 6.0 was used for antigen retrieval.



Immunohistochemistry analysis of paraffin-embedded Human skeletal muscle using MYH6/7 antibody. High-pressure and temperature Sodium Citrate pH 6.0 was used for antigen retrieval.