

MYH1 RABBIT PAB

Cat.#: S216667

Product Name: Anti-MYH1 Rabbit Polyclonal Antibody

Synonyms: MYHa; MYHSA1; MyHC-2x; MyHC-2X/D

UNIPROT ID: P12882 (Gene Accession - BC114545)

Background: Myosin is a major contractile protein which converts chemical energy into mechanical energy through the hydrolysis of ATP. Myosin is a hexameric protein composed of a pair of myosin heavy chains (MYH) and two pairs of nonidentical light chains. Myosin heavy chains are encoded by a multigene family. In mammals at least 10 different myosin heavy chain (MYH) isoforms have been described from striated, smooth, and nonmuscle cells. These isoforms show expression that is spatially and temporally regulated during development.

Immunogen: Fusion protein of human MYH1

Applications: ELISA, IHC

Recommended Dilutions: IHC: 50-200; ELISA: 1000-5000

Host Species: Rabbit

Clonality: Rabbit Polyclonal

Isotype: Immunogen-specific rabbit IgG

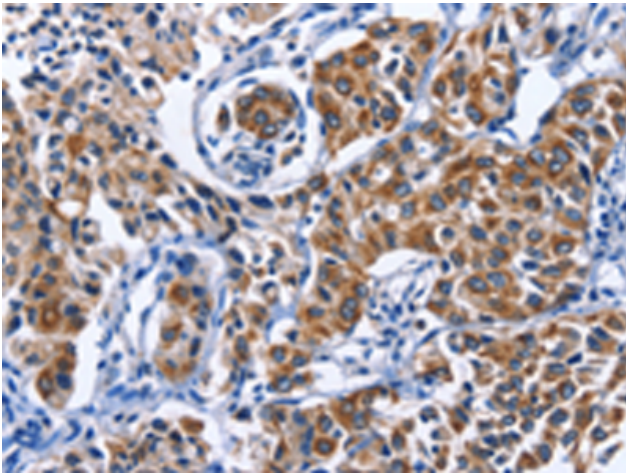
Purification: Antigen affinity purification

Species Reactivity: Human, Mouse

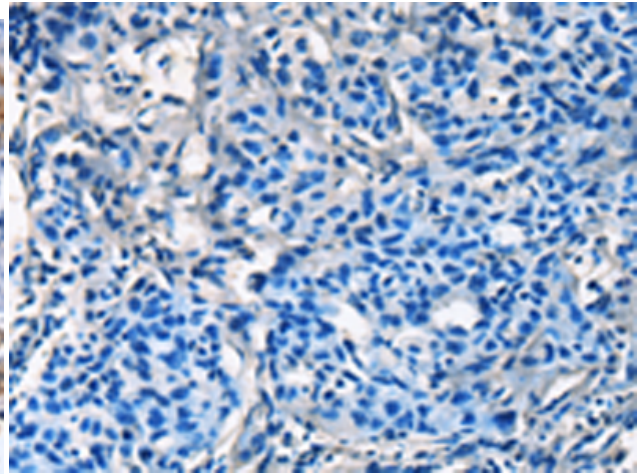
Constituents: PBS (without Mg²⁺ and Ca²⁺), pH 7.4, 150 mM NaCl, 0.05% Sodium Azide and 40% glycerol

Research Areas: Signal Transduction

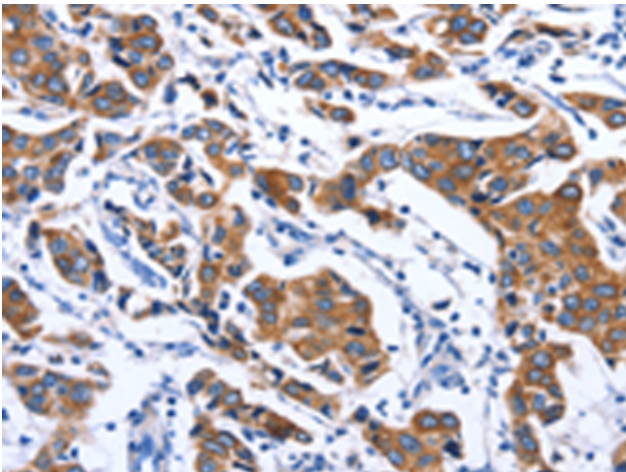
Storage & Shipping: Store at -20°C. Avoid repeated freezing and thawing



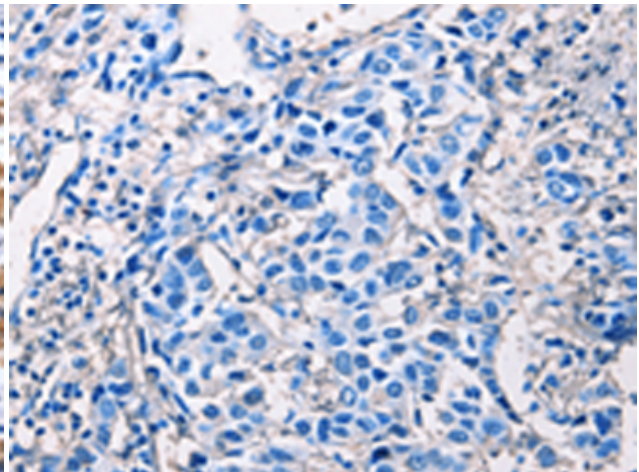
Immunohistochemistry analysis of paraffin embedded Human lung cancer tissue using 216667(MYH1 Antibody) at a dilution of 1/40(Cytoplasm).



In comparison with the IHC on the left, the same paraffin-embedded Human lung cancer tissue is first treated with the fusion protein and then with 216667(Anti-MYH1 Antibody) at dilution 1/40.



The image on the left is immunohistochemistry of paraffin-embedded Human breast cancer tissue using 216667(Anti-MYH1 Antibody) at a dilution of 1/40.



In comparison with the IHC on the left, the same paraffin-embedded Human breast cancer tissue is first treated with fusion protein and then with D221015(Anti-MYH1 Antibody) at dilution 1/40.