

MYEF2 RABBIT PAB

Cat.#: S219261

Product Name: Anti-MYEF2 Rabbit Polyclonal Antibody

Synonyms: MEF-2; MST156; myEF-2; MSTP156; HsT18564

UNIPROT ID: Q9P2K5 (Gene Accession - BC014533)

Background: Transcriptional repressor of the myelin basic protein gene (MBP). Binds to the proximal MBI element 5'-TTGTCC-3' of the MBP promoter. Its binding to MBI and function are inhibited by PURA (By similarity).

Immunogen: Fusion protein of human MYEF2

Applications: ELISA, WB, IHC

Recommended Dilutions: IHC: 50-200;WB: 500-2000;ELISA: 5000-10000

Host Species: Rabbit

Clonality: Rabbit Polyclonal

Isotype: Immunogen-specific rabbit IgG

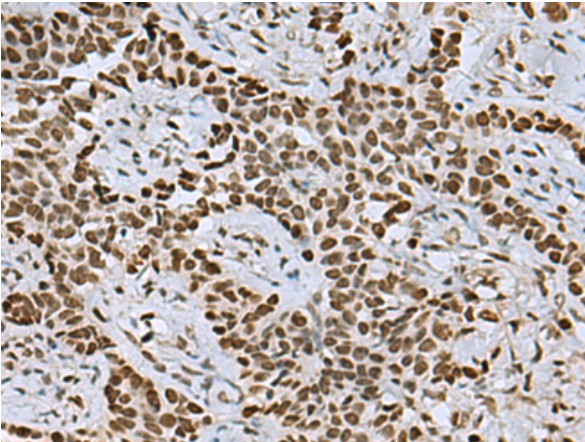
Purification: Antigen affinity purification

Species Reactivity: Human

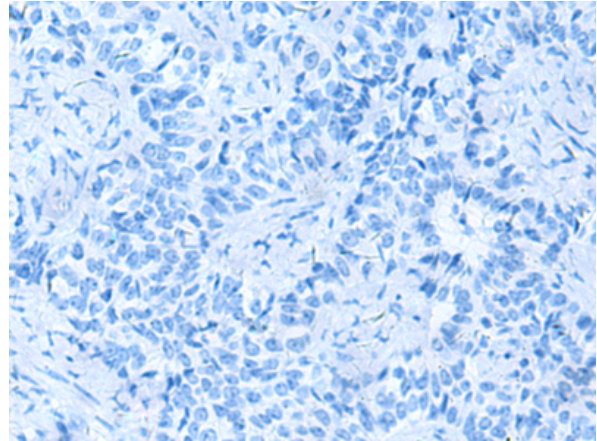
Constituents: PBS (without Mg²⁺ and Ca²⁺), pH 7.4, 150 mM NaCl, 0.05% Sodium Azide and 40% glycerol

Research Areas: Epigenetics and Nuclear Signaling

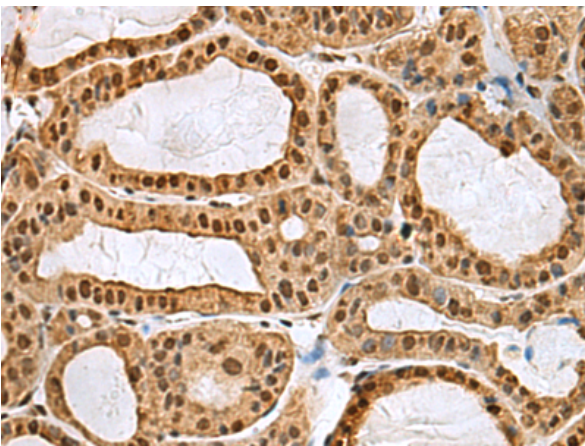
Storage & Shipping: Store at -20°C. Avoid repeated freezing and thawing



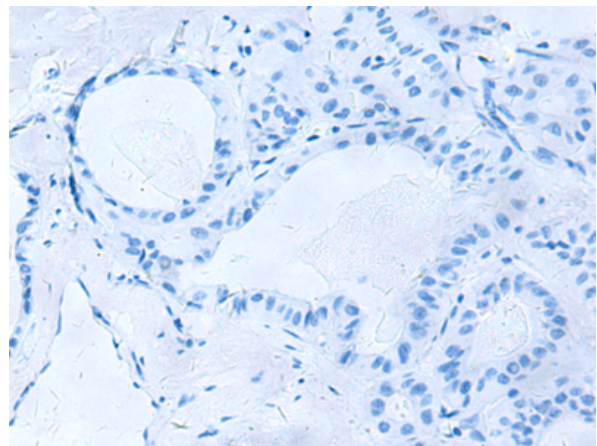
Immunohistochemistry analysis of paraffin embedded Human ovarian cancer tissue using 219261(MYEF2 Antibody) at a dilution of 1/55(Nucleus).



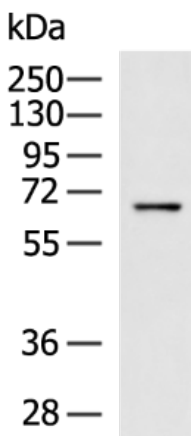
In comparison with the IHC on the left, the same paraffin-embedded Human ovarian cancer tissue is first treated with the fusion protein and then with 219261(Anti-MYEF2 Antibody) at dilution 1/55.



The image on the left is immunohistochemistry of paraffin-embedded Human thyroid cancer tissue using 219261(Anti-MYEF2 Antibody) at a dilution of 1/55.



In comparison with the IHC on the left, the same paraffin-embedded Human thyroid cancer tissue is first treated with fusion protein and then with D226147(Anti-MYEF2 Antibody) at dilution 1/55.



Gel: 8%SDS-PAGE, Lysate: 40 µg;
Lane: 231 cell lysate;
Primary antibody: 219261(MYEF2 Antibody) at dilution 1/600;
Secondary antibody: HRP-conjugated Goat anti rabbit IgG at 1/5000 dilution;
Exposure time: 1 minute



Product Description

Pioneering GTPase and Oncogene Product Development since 2010
