

## MVP RABBIT MAB

**Cat.#:** N262555

**Product Name:** Anti-MVP Rabbit Monoclonal Antibody

**Synonyms:** LRP; MVP; VAULT1

**UNIPROT ID:** Q14764

**Background:** Required for normal vault structure. Vaults are multi-subunit structures that may act as scaffolds for proteins involved in signal transduction. Vaults may also play a role in nucleo-cytoplasmic transport.

**Immunogen:** A synthetic peptide of human MVP

**Applications:** WB,IHC-F,IHC-P,ICC/IF

**Recommended Dilutions:** WB: 1/500-1/1000 IHC: 1/50-1/100 IF: 1/50-1/200

**Host Species:** Rabbit

**Clonality:** Rabbit Monoclonal

**Clone ID:** R09-3D5

**MW:** Calculated MW: 99 kDa; Observed MW: 110 kDa

**Isotype:** IgG

**Purification:** Affinity Purified

**Species Reactivity:** Human

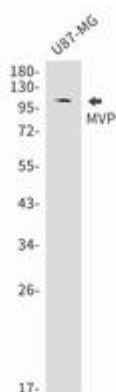
**Conjugation:** Unconjugated

**Modification:** Unmodified

**Constituents:** PBS (without Mg<sup>2+</sup> and Ca<sup>2+</sup>), pH 7.3 containing 50% glycerol, 0.5% BSA and 0.02% sodium azide

**Research Areas:** Signal Transduction

**Storage & Shipping:** Store at -20°C. Avoid repeated freezing and thawing



Western blot analysis of MVP in U87-MG lysates using MVP antibody.



# Product Description

Pioneering GTPase and Oncogene Product Development since 2010

---