

MUC5AC RABBIT PAB

Cat.#: S219927

Product Name: Anti-MUC5AC Rabbit Polyclonal Antibody

Synonyms: TBM; leB; MUC5; mucin

UNIPROT ID: P98088 (Gene Accession - BC033831)

Background: Predicted to be an extracellular matrix structural constituent. Involved in phosphatidylinositol-mediated signaling. Located in cytoplasm; extracellular space; and mucus layer. Implicated in dry eye syndrome. Biomarker of several diseases, including Sjogren's syndrome; biliary tract disease (multiple); cystic fibrosis; eye disease (multiple); and pancreatic cancer (multiple).

Immunogen: Synthetic peptide of human MUC5AC

Applications: ELISA, IHC

Recommended Dilutions: IHC: 50-200; ELISA: 5000-10000

Host Species: Rabbit

Clonality: Rabbit Polyclonal

Isotype: Immunogen-specific rabbit IgG

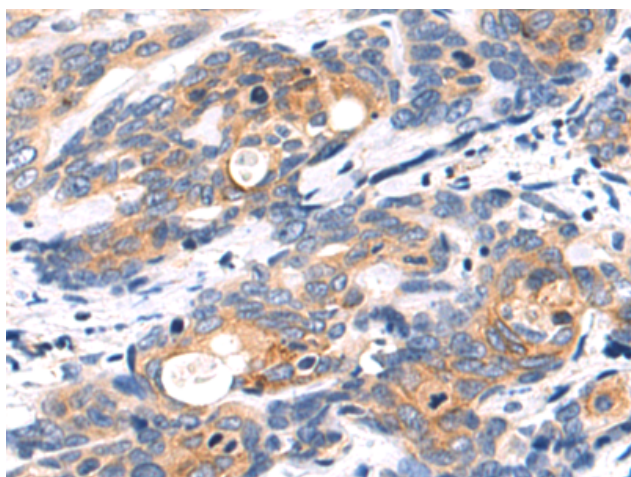
Purification: Antigen affinity purification

Species Reactivity: Human

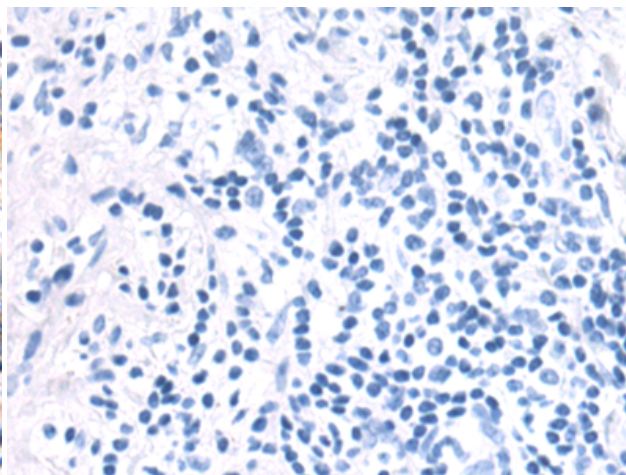
Constituents: PBS (without Mg²⁺ and Ca²⁺), pH 7.4, 150 mM NaCl, 0.05% Sodium Azide and 40% glycerol

Research Areas: Signal Transduction, Cancer

Storage & Shipping: Store at -20°C. Avoid repeated freezing and thawing



Immunohistochemistry analysis of paraffin embedded Human cervical cancer tissue using 219927(MUC5AC Antibody) at a dilution of 1/50(Cytoplasm).



In comparison with the IHC on the left, the same paraffin-embedded Human cervical cancer tissue is first treated with the synthetic peptide and then with 219927(Anti-MUC5AC Antibody) at dilution 1/50.