

## MUC16 RABBIT PAB

**Cat.#:** S213884

**Product Name:** Anti-MUC16 Rabbit Polyclonal Antibody

**Synonyms:** CA125

**UNIPROT ID:** Q8WXI7 (Gene Accession - NP\_078966 )

**Background:** This gene encodes a protein that is a member of the mucin family. Mucins are high molecular weight, O-glycosylated proteins that play an important role in forming a protective mucous barrier, and are found on the apical surfaces of the epithelia. The encoded protein is a membrane-tethered mucin that contains an extracellular domain at its amino terminus, a large tandem repeat domain, and a transmembrane domain with a short cytoplasmic domain. The amino terminus is highly glycosylated, while the repeat region contains 156 amino acid repeats unit that are rich in serines, threonines, and prolines. Interspersed within the repeats are Sea urchin sperm protein Enterokinase and Agrin (SEA) modules, leucine-rich repeats and ankyrin (ANK) repeats. These regions together form the ectodomain, and there is a potential cleavage site found near an SEA module close to the transmembrane domain. This protein is thought to play a role in forming a barrier, protecting epithelial cells from pathogens. Products of this gene have been used as a marker for different cancers, with higher expression levels associated with poorer outcomes.

**Immunogen:** Synthetic peptide of human MUC16

**Applications:** ELISA, IHC

**Recommended Dilutions:** IHC: 25-100; ELISA: 2000-5000

**Host Species:** Rabbit

**Clonality:** Rabbit Polyclonal

**Isotype:** Immunogen-specific rabbit IgG

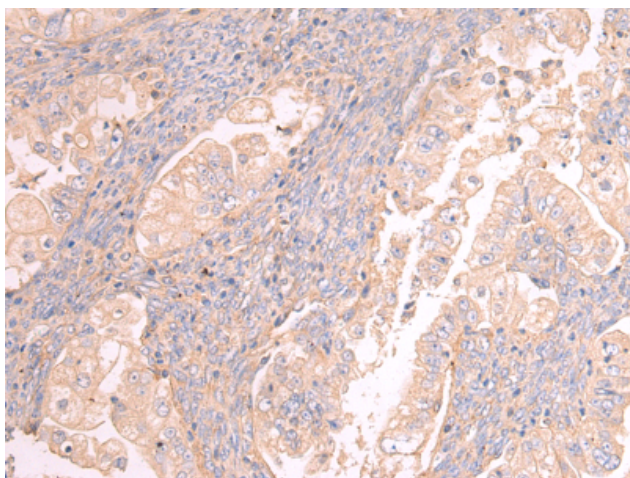
**Purification:** Antigen affinity purification

**Species Reactivity:** Human


**Constituents:** PBS (without Mg<sup>2+</sup> and Ca<sup>2+</sup>), pH 7.4, 150 mM NaCl, 0.05% Sodium Azide and 40% glycerol

**Research Areas:** Cell Markers, Signal Transduction, Cancer

**Storage & Shipping:** Store at -20°C. Avoid repeated freezing and thawing



Immunohistochemistry analysis of paraffin-embedded Human ovarian cancer tissue using 213884(MUC16 Antibody) at a dilution of 1/20(Cytoplasm and Cell membrane).

 Immunohistochemistry analysis of paraffin-embedded Human bladder cancer tissue using 213884(Anti-MUC16 Antibody) at a dilution of 1/20.



# Product Description

Pioneering GTPase and Oncogene Product Development since 2010

---