

MUC15 RABBIT PAB

Cat.#: S216345

Product Name: Anti-MUC15 Rabbit Polyclonal Antibody

Synonyms: PAS3; MUC-15; PASIII

UNIPROT ID: Q8N387 (Gene Accession - BC058007)

Background: May play a role in the cell adhesion to the extracellular matrix.

Immunogen: Fusion protein of human MUC15

Applications: ELISA, IHC

Recommended Dilutions: IHC: 100-300; ELISA: 5000-10000

Host Species: Rabbit

Clonality: Rabbit Polyclonal

Isotype: Immunogen-specific rabbit IgG

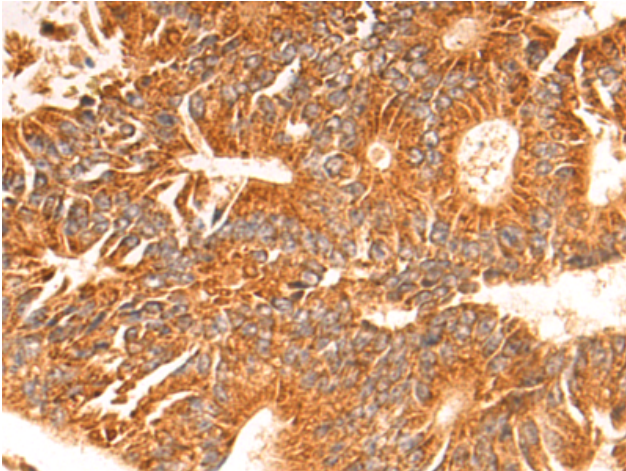
Purification: Antigen affinity purification

Species Reactivity: Human

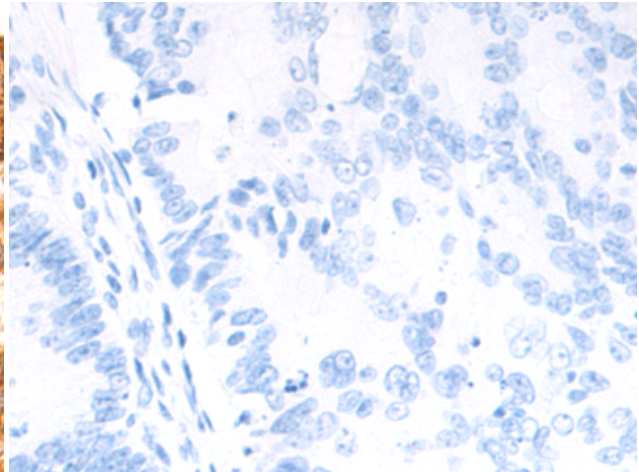
Constituents: PBS (without Mg²⁺ and Ca²⁺), pH 7.4, 150 mM NaCl, 0.05% Sodium Azide and 40% glycerol

Research Areas: Signal Transduction

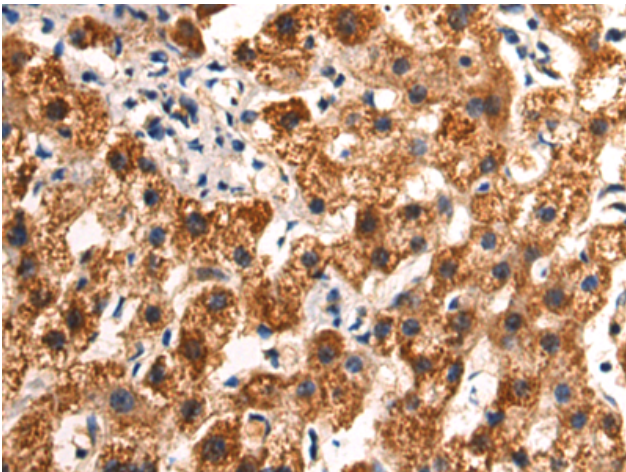
Storage & Shipping: Store at -20°C. Avoid repeated freezing and thawing



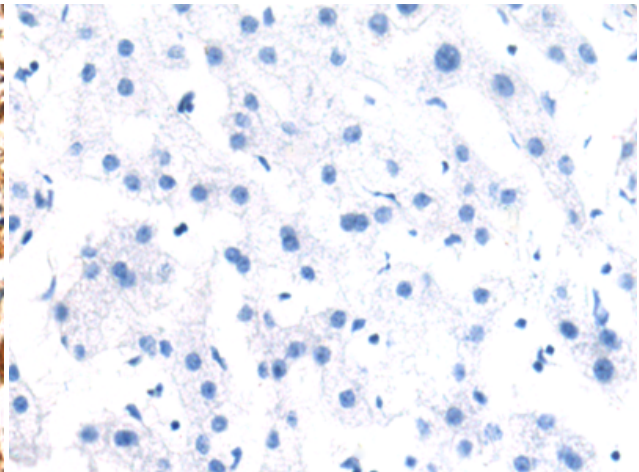
Immunohistochemistry analysis of paraffin embedded Human colorectal cancer tissue using 216345(MUC15 Antibody) at a dilution of 1/80(Cytoplasm).



In comparison with the IHC on the left, the same paraffin-embedded Human colorectal cancer tissue is first treated with the fusion protein and then with 216345(Anti-MUC15 Antibody) at dilution 1/80.



The image on the left is immunohistochemistry of paraffin-embedded Human liver cancer tissue using 216345(Anti-MUC15 Antibody) at a dilution of 1/80.



In comparison with the IHC on the left, the same paraffin-embedded Human liver cancer tissue is first treated with fusion protein and then with D220250(Anti-MUC15 Antibody) at dilution 1/80.