

MTHFR RABBIT MAB

Cat.#: N262547

Product Name: Anti-MTHFR Rabbit Monoclonal Antibody

Synonyms: MTHFR; Methylenetetrahydrofolate reductase

UNIPROT ID: P42898

Background: The protein encoded by this gene catalyzes the conversion of 5,10-methylenetetrahydrofolate to 5-methyltetrahydrofolate, a co-substrate for homocysteine remethylation to methionine. Genetic variation in this gene influences susceptibility to occlusive vascular disease, neural tube defects, colon cancer and acute leukemia, and mutations in this gene are associated with methylenetetrahydrofolate reductase deficiency.

Immunogen: Recombinant protein of human MTHFR

Applications: WB,ICC/IF,IP

Recommended Dilutions: WB: 1/500-1/1000 IF: 1/50-1/200 IP: 1/20

Host Species: Rabbit

Clonality: Rabbit Monoclonal

Clone ID: R02-6H3

MW: Calculated MW: 75 kDa; Observed MW: 75 kDa

Isotype: IgG

Purification: Affinity Purified

Species Reactivity: Human,Mouse

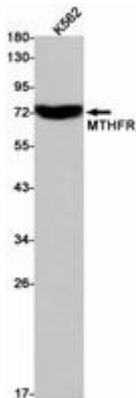
Conjugation: Unconjugated

Modification: Unmodified

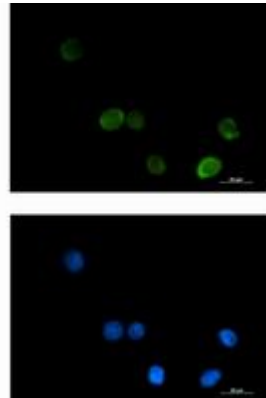
Constituents: PBS (without Mg²⁺ and Ca²⁺), pH 7.3 containing 50% glycerol, 0.5% BSA and 0.02% sodium azide

Research Areas: Signal Transduction

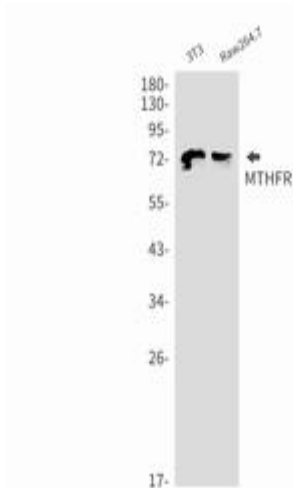
Storage & Shipping: Store at -20°C. Avoid repeated freezing and thawing



Western blot analysis of MTHFR in K562 lysates using MTHFR antibody



Immunocytochemistry analysis of MTHFR (green) in K562 using MTHFR antibody, and DAPI (blue).



Western blot analysis of MTHFR in 3T3, Raw264.7 lysates using MTHFR antibody.