

## MTHFD2 RABBIT PAB

**Cat.#:** S219338

**Product Name:** Anti-MTHFD2 Rabbit Polyclonal Antibody

**Synonyms:** NMDMC

**UNIPROT ID:** P13995 (Gene Accession - BC001548 )

**Background:** This gene encodes a nuclear-encoded mitochondrial bifunctional enzyme with methylenetetrahydrofolate dehydrogenase and methenyltetrahydrofolate cyclohydrolase activities. The enzyme functions as a homodimer and is unique in its absolute requirement for magnesium and inorganic phosphate. Formation of the enzyme-magnesium complex allows binding of NAD. Alternative splicing results in two different transcripts, one protein-coding and the other not protein-coding. This gene has a pseudogene on chromosome 7.

**Immunogen:** Fusion protein of human MTHFD2

**Applications:** ELISA, IHC

**Recommended Dilutions:** IHC: 50-200; ELISA: 5000-10000

**Host Species:** Rabbit

**Clonality:** Rabbit Polyclonal

**Isotype:** Immunogen-specific rabbit IgG

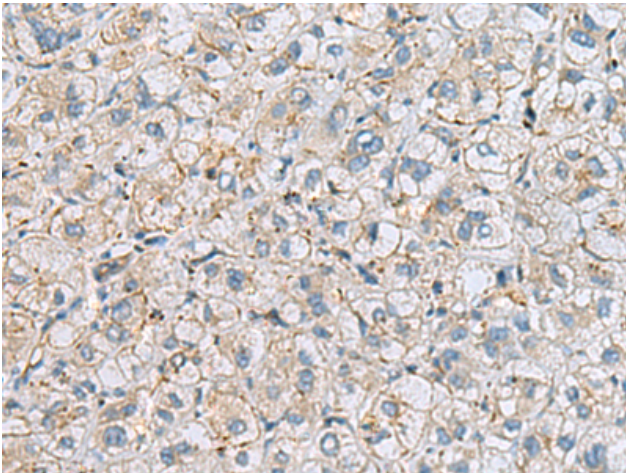
**Purification:** Antigen affinity purification

**Species Reactivity:** Human, Mouse

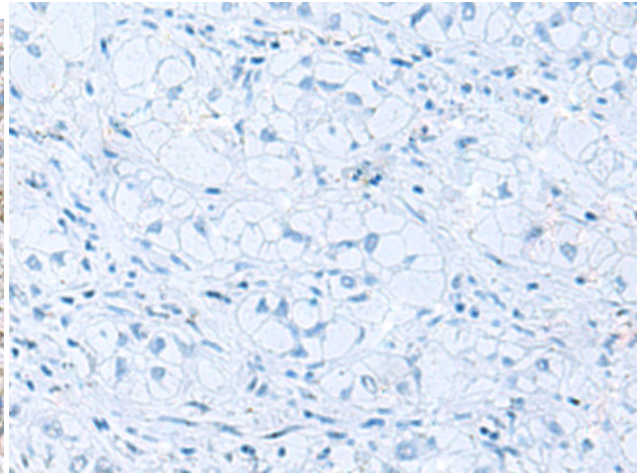
**Constituents:** PBS (without Mg<sup>2+</sup> and Ca<sup>2+</sup>), pH 7.4, 150 mM NaCl, 0.05% Sodium Azide and 40% glycerol

**Research Areas:** Metabolism

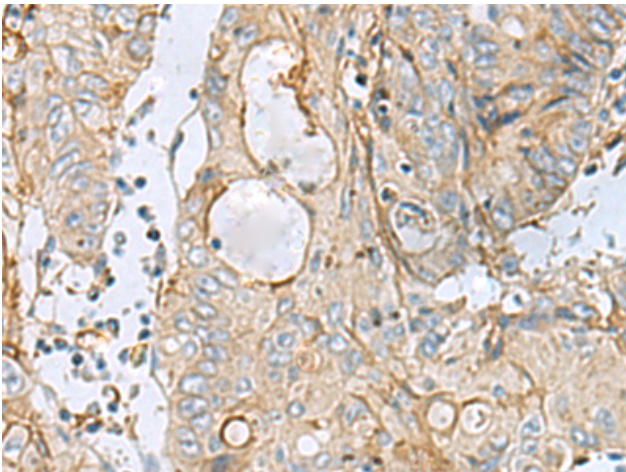
**Storage & Shipping:** Store at -20°C. Avoid repeated freezing and thawing



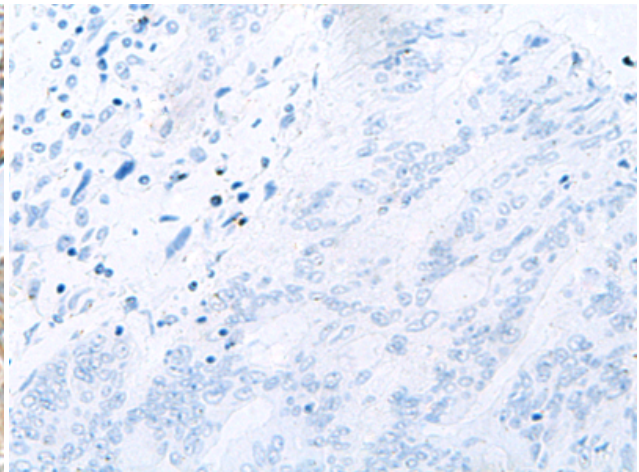
Immunohistochemistry analysis of paraffin-embedded Human liver cancer tissue using 219338(MTHFD2 Antibody) at a dilution of 1/65(Cytoplasm).



In comparison with the IHC on the left, the same paraffin-embedded Human liver cancer tissue is first treated with the fusion protein and then with 219338(Anti-MTHFD2 Antibody) at dilution 1/65.



The image on the left is immunohistochemistry of paraffin-embedded Human colorectal cancer tissue using 219338(Anti-MTHFD2 Antibody) at a dilution of 1/65.



In comparison with the IHC on the left, the same paraffin-embedded Human colorectal cancer tissue is first treated with fusion protein and then with D226470(Anti-MTHFD2 Antibody) at dilution 1/65.