

## MTF1 RABBIT PAB

**Cat.#:** S217618

**Product Name:** Anti-MTF1 Rabbit Polyclonal Antibody

**Synonyms:** ZRF; MTF-1

**UNIPROT ID:** Q14872 (Gene Accession - BC014454 )

**Background:** This gene encodes a transcription factor that induces expression of metallothioneins and other genes involved in metal homeostasis in response to heavy metals such as cadmium, zinc, copper, and silver. The protein is a nucleocytoplasmic shuttling protein that accumulates in the nucleus upon heavy metal exposure and binds to promoters containing a metal-responsive element (MRE).

**Immunogen:** Fusion protein of human MTF1

**Applications:** ELISA, IHC

**Recommended Dilutions:** IHC: 50–200; ELISA: 5000–10000

**Host Species:** Rabbit

**Clonality:** Rabbit Polyclonal

**Isotype:** Immunogen-specific rabbit IgG

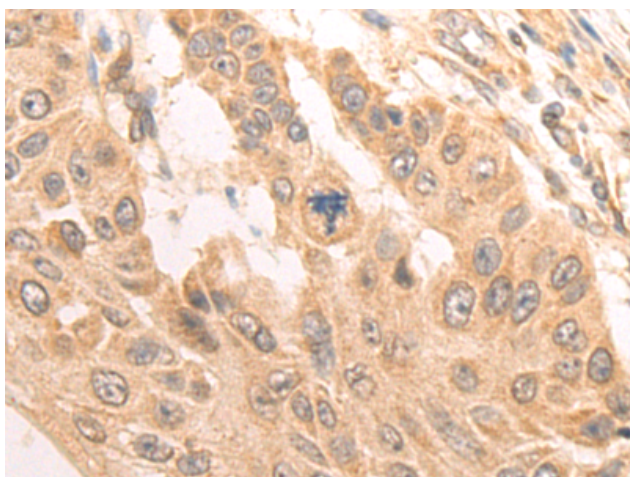
**Purification:** Antigen affinity purification

**Species Reactivity:** Human

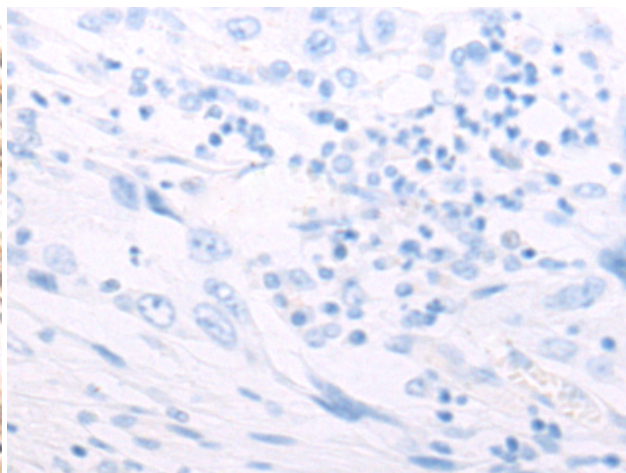
**Constituents:** PBS (without Mg<sup>2+</sup> and Ca<sup>2+</sup>), pH 7.4, 150 mM NaCl, 0.05% Sodium Azide and 40% glycerol

**Research Areas:** Epigenetics and Nuclear Signaling

**Storage & Shipping:** Store at -20°C. Avoid repeated freezing and thawing



Immunohistochemistry analysis of paraffin embedded Human esophagus cancer tissue using 217618(MTF1 Antibody) at a dilution of 1/50(Cytoplasm).



In comparison with the IHC on the left, the same paraffin-embedded Human esophagus cancer tissue is first treated with the fusion protein and then with 217618(Anti-MTF1 Antibody) at dilution 1/50.