

MTCO2 RABBIT MAB

Cat.#: N262543

Product Name: Anti-MTCO2 Rabbit Monoclonal Antibody

Synonyms: MT-CO2; COX2; CO2; Cytochrome c oxidase II; MTCO2; COII; COXII

UNIPROT ID: P00403

Background: Cytochrome c oxidase is the component of the respiratory chain that catalyzes the reduction of oxygen to water. Subunits 1-3 form the functional core of the enzyme complex. Subunit 2 transfers the electrons from cytochrome c via its binuclear copper A center to the bimetallic center of the catalytic subunit 1.

Immunogen: A synthetic peptide of human MTCO2

Applications: WB,IHC-F,IHC-P,ICC/IF,IP

Recommended Dilutions: WB: 1/500-1/1000 IHC: 1/50-1/100 IF: 1/50-1/200 IP: 1/20

Host Species: Rabbit

Clonality: Rabbit Monoclonal

Clone ID: R05-2E2

MW: Calculated MW: 26 kDa; Observed MW: 21 kDa

Isotype: IgG

Purification: Affinity Purified

Species Reactivity: Human

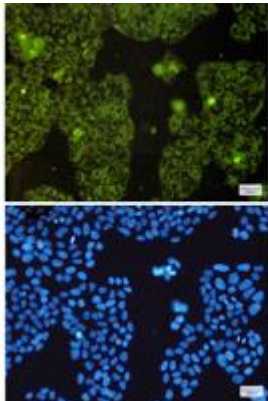
Conjugation: Unconjugated

Modification: Unmodified

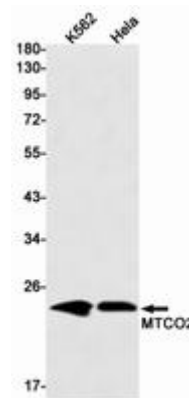
Constituents: PBS (without Mg²⁺ and Ca²⁺), pH 7.3 containing 50% glycerol, 0.5% BSA and 0.02% sodium azide

Research Areas: Signal Transduction

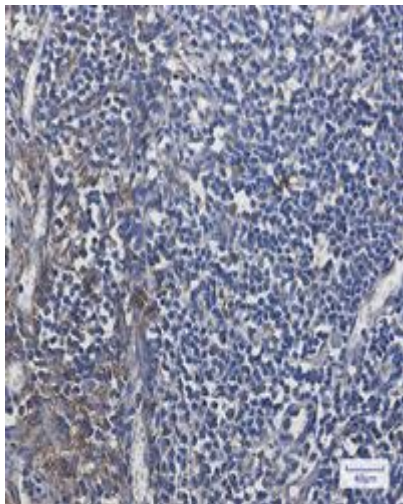
Storage & Shipping: Store at -20°C. Avoid repeated freezing and thawing



Immunocytochemistry analysis of MTCO2 (green) in HeLa using MTCO2 antibody, and DAPI (blue)



Western blot analysis of MTCO2 in K562, HeLa lysates using MTCO2 antibody.



Immunohistochemistry analysis of paraffin-embedded Human tonsil using MTCO2 antibody. High-pressure and temperature Sodium Citrate pH 6.0 was used for antigen retrieval.