

## MTCH2 RABBIT PAB

**Cat.#:** S217616

**Product Name:** Anti-MTCH2 Rabbit Polyclonal Antibody

**Synonyms:** MIMP; HSPC032; SLC25A50

**UNIPROT ID:** Q9Y6C9 (Gene Accession - BC000875 )

**Background:** Mitochondrial carrier homolog 2 also known as MTCH2 is a protein which in humans is encoded by the MTCH2 gene. MTCH2 (mitochondrial carrier homolog 2), is a 303 amino acid multi-pass mitochondrial membrane protein that contains two solcar repeats and functions to induce mitochondrial depolarization. The substrate transported is not yet known. Induces mitochondrial depolarization.

**Immunogen:** Fusion protein of human MTCH2

**Applications:** ELISA, WB, IHC

**Recommended Dilutions:** IHC: 50-200;WB: 1000-5000;ELISA: 2000-10000

**Host Species:** Rabbit

**Clonality:** Rabbit Polyclonal

**Isotype:** Immunogen-specific rabbit IgG

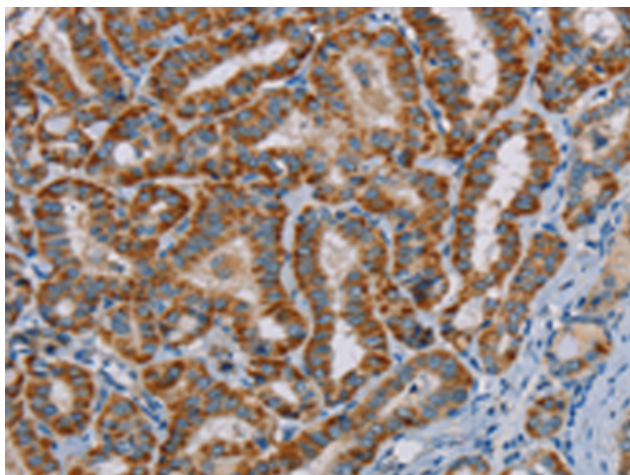
**Purification:** Antigen affinity purification

**Species Reactivity:** Human, Mouse

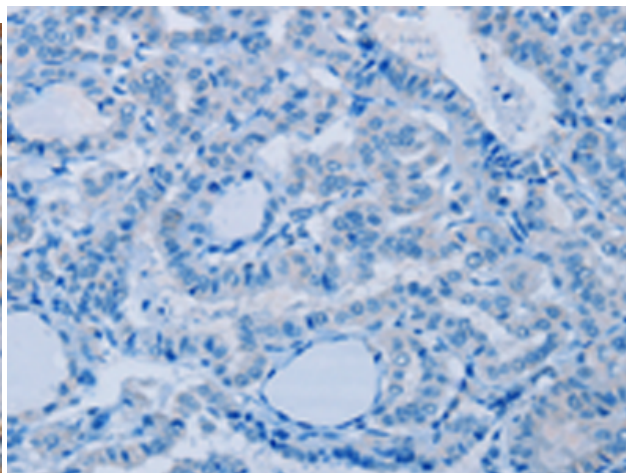
**Constituents:** PBS (without Mg<sup>2+</sup> and Ca<sup>2+</sup>), pH 7.4, 150 mM NaCl, 0.05% Sodium Azide and 40% glycerol

**Research Areas:** Metabolism, Cancer

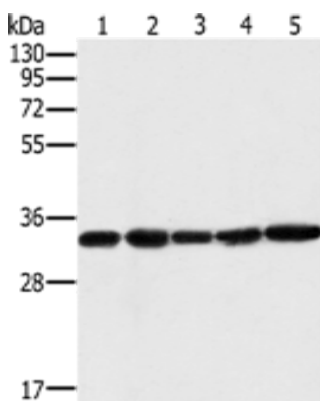
**Storage & Shipping:** Store at -20°C. Avoid repeated freezing and thawing



Immunohistochemistry analysis of paraffin embedded Human thyroid cancer tissue using 217616(MTCH2 Antibody) at a dilution of 1/45(Cytoplasm).



In comparison with the IHC on the left, the same paraffin-embedded Human thyroid cancer tissue is first treated with the fusion protein and then with 217616(Anti-MTCH2 Antibody) at dilution 1/45.



Gel: 10%SDS-PAGE, Lysate: 40 µg;  
 Lane 1-5: Human testis tissue, K562 cells, PC3 cells, human liver cancer tissue, hela cells;  
 Primary antibody: 217616(MTCH2 Antibody) at dilution 1/400;  
 Secondary antibody: Goat anti rabbit IgG at 1/8000 dilution;  
 Exposure time: 40 seconds