

MTAP RABBIT MAB

Cat.#: N263438

Product Name: Anti-MTAP Rabbit Monoclonal Antibody

Synonyms: BDMF; MSAP; DMSFH; LGMBF; DMSMFH; c86fus; HEL-249

UNIPROT ID: Q13126

Background: This gene encodes an enzyme that plays a major role in polyamine metabolism and is important for the salvage of both adenine and methionine. The encoded enzyme is deficient in many cancers because this gene and the tumor suppressor p16 gene are co-deleted. Multiple alternatively spliced transcript variants have been described for this gene, but their full-length natures remain unknown. [provided by RefSeq, Jul 2008]

Immunogen: A synthetic peptide of human MTAP

Applications: WB,IP

Recommended Dilutions: WB: 1/500-1/1000 IP: 1/20

Host Species: Rabbit

Clonality: Rabbit Monoclonal

Clone ID: R03-411

MW: Calculated MW: 31 kDa; Observed MW: 31 kDa

Isotype: IgG

Purification: Affinity Purified

Species Reactivity: Human,Mouse,Rat

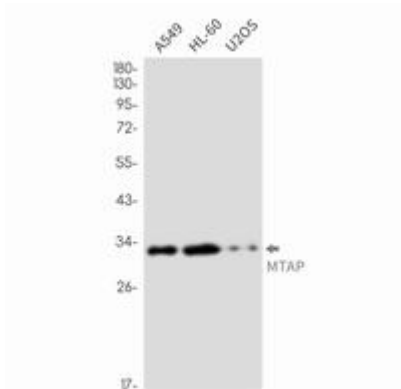
Conjugation: Unconjugated

Modification: Unmodified

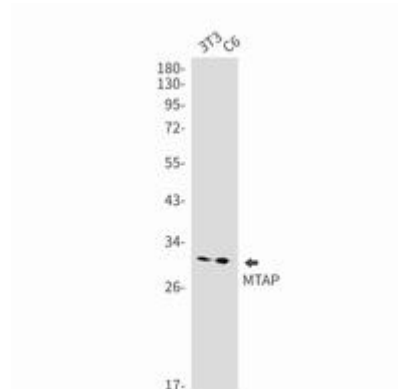
Constituents: PBS (without Mg²⁺ and Ca²⁺), pH 7.3 containing 50% glycerol, 0.5% BSA and 0.02% sodium azide

Research Areas: Signal Transduction

Storage & Shipping: Store at -20°C. Avoid repeated freezing and thawing



Western blot analysis of MTAP in A549, HL-60, U2OS lysates using MTAP antibody.



Western blot analysis of MTAP in 3T3, C6 lysates using MTAP antibody.