

MST1 RABBIT MAB

Cat.#: N263117

Product Name: Anti-MST1 Rabbit Monoclonal Antibody

Synonyms: HGFL; MSP; MST1; NF15S2

UNIPROT ID: P26927

Background: Probably has no proteolytic activity, since crucial characteristic of serine proteases catalytic sites are not conserved.

Immunogen: A synthetic peptide of human MST1

Applications: WB,IHC-P

Recommended Dilutions: WB: 1/500-1/1000 IHC: 1/50-1/100

Host Species: Rabbit

Clonality: Rabbit Monoclonal

Clone ID: R04-1D6

MW: Calculated MW: 80 kDa; Observed MW: 96 kDa

Isotype: IgG

Purification: Affinity Purified

Species Reactivity: Human,Mouse,Rat

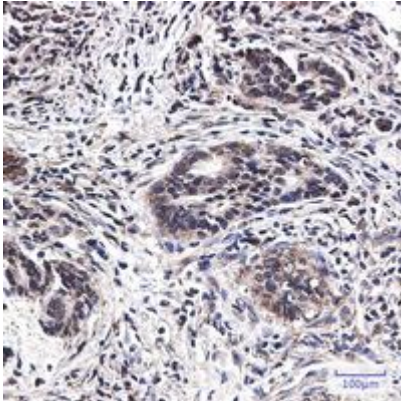
Conjugation: Unconjugated

Modification: Unmodified

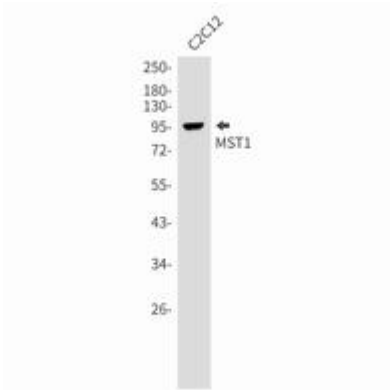
Constituents: PBS (without Mg²⁺ and Ca²⁺), pH 7.3 containing 50% glycerol, 0.5% BSA and 0.02% sodium azide

Research Areas: Cell Biology

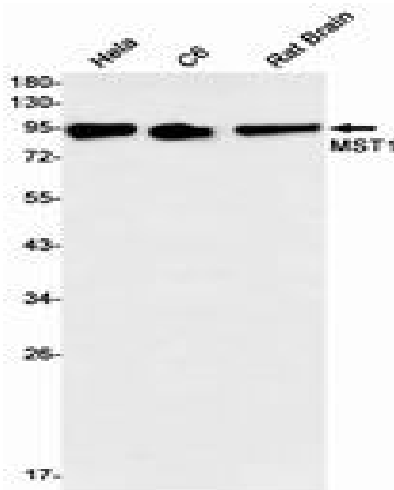
Storage & Shipping: Store at -20°C. Avoid repeated freezing and thawing



Immunohistochemistry analysis of paraffin-embedded Human colon cancer using MST1 antibody. High- pressure and temperature Sodium Citrate pH 6.0 was used for antigen retrieval.



Western blot analysis of MST1 in C2C12 lysates using MST1 antibody.



Western blot analysis of MST1 in HeLa, C6, rat Brain lysates using MST1 antibody.