

MSP RABBIT MAB

Cat.#: N261585

Product Name: Anti-MSP Rabbit Monoclonal Antibody

Synonyms: serine threonine kinase 3/4; KRS1; MST2/KRS2; MST1; YSK3; TIIAC

UNIPROT ID: Q13043

Background: Stress-activated, pro-apoptotic kinase which, following caspase-cleavage, enters the nucleus and induces chromatin condensation followed by internucleosomal DNA fragmentation.

Immunogen: A synthetic peptide of human Serine/threonine-protein kinase 4

Applications: WB, ICC/IF, IP

Recommended Dilutions: WB: 1/500-1/1000 IF: 1/50-1/200 IP: 1/20

Host Species: Rabbit

Clonality: Rabbit Monoclonal

Clone ID: R09-3C1

MW: Calculated MW: 56 kDa; Observed MW: 60 kDa

Isotype: IgG

Purification: Affinity Purified

Species Reactivity: Human, Mouse, Rat

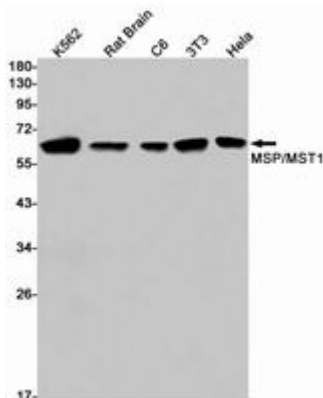
Conjugation: Unconjugated

Modification: Unmodified

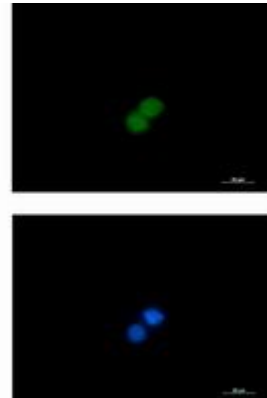
Constituents: PBS (without Mg²⁺ and Ca²⁺), pH 7.3 containing 50% glycerol, 0.5% BSA and 0.02% sodium azide

Research Areas: Cell Biology

Storage & Shipping: Store at -20°C. Avoid repeated freezing and thawing



Western blot analysis of MSP/MST1 in K562, rat Brain, C6, 3T3, HeLa lysates using MSP/MST1 antibody.



Immunocytochemistry analysis of MSP (green) in K562 using MSP antibody, and DAPI (blue).