

MSH6 RABBIT MAB

Cat.#: N261636

Product Name: Anti-MSH6 Rabbit Monoclonal Antibody

Synonyms: MSH6; GTBP; DNA mismatch repair protein Msh6; hMSH6; G/T mismatch-binding protein; GTBP; GTMBP; MutS-alpha 160 kDa subunit; p160

UNIPROT ID: P52701

Background: The DNA mismatch repair system (MMR) repairs post-replication DNA, inhibits recombination between nonidentical DNA sequences, and induces both checkpoint and apoptotic responses following certain types of DNA damage. MSH2 (MutS homologue 2) forms the hMutS- α dimer with MSH6 and is an essential component of the mismatch repair process.

Immunogen: A synthetic peptide of human MSH6

Applications: WB,IHC-F,IHC-P,ICC/IF

Recommended Dilutions: WB: 1/500-1/1000 IHC: 1/50-1/100 IF: 1/50-1/200

Host Species: Rabbit

Clonality: Rabbit Monoclonal

Clone ID: R05-2B5

MW: Calculated MW: 153 kDa; Observed MW: 163 kDa

Isotype: IgG

Purification: Affinity Purified

Species Reactivity: Human,Mouse,Rat

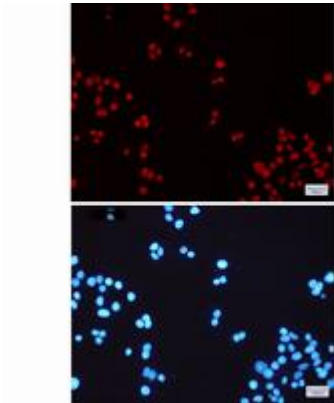
Conjugation: Unconjugated

Modification: Unmodified

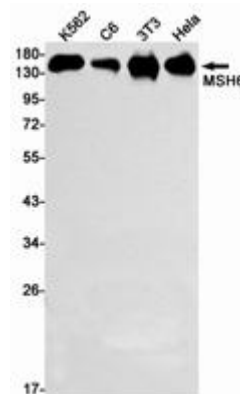
Constituents: PBS (without Mg²⁺ and Ca²⁺), pH 7.3 containing 50% glycerol, 0.5% BSA and 0.02% sodium azide

Research Areas: Epigenetics and Nuclear Signaling

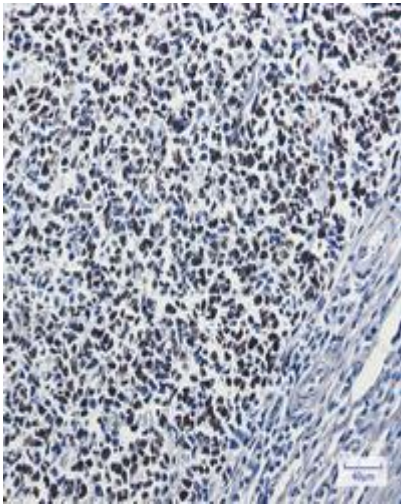
Storage & Shipping: Store at -20°C. Avoid repeated freezing and thawing



Immunocytochemistry analysis of MSH6 (green) in HeLa using MSH6 antibody, and DAPI (blue)



Western blot analysis of MSH6 in K562, C6, 3T3, HeLa lysates using MSH6 antibody.



Immunohistochemistry analysis of paraffin-embedded Human tonsil using MSH6 antibody. High-pressure and temperature Sodium Citrate pH 6.0 was used for antigen retrieval.