

## MSH6 RABBIT MAB

**Cat.#:** N263435

**Product Name:** Anti-MSH6 Rabbit Monoclonal Antibody

**Synonyms:** MSH6; GTBP; DNA mismatch repair protein Msh6; hMSH6; G/T mismatch-binding protein; GTBP; GTMBP; MutS-alpha 160 kDa subunit; p160

**UNIPROT ID:** P52701

**Background:** The DNA mismatch repair system (MMR) repairs post-replication DNA, inhibits recombination between nonidentical DNA sequences, and induces both checkpoint and apoptotic responses following certain types of DNA damage. MSH2 (MutS homologue 2) forms the hMutS- $\alpha$  dimer with MSH6 and is an essential component of the mismatch repair process.

**Immunogen:** A synthetic peptide of human MSH6

**Applications:** WB, ICC/IF, IP

**Recommended Dilutions:** WB: 1/500-1/1000 IF: 1/50-1/200 IP: 1/20

**Host Species:** Rabbit

**Clonality:** Rabbit Monoclonal

**Clone ID:** R02-6G6

**MW:** Calculated MW: 153 kDa; Observed MW: 163 kDa

**Isotype:** IgG

**Purification:** Affinity Purified

**Species Reactivity:** Human, Mouse

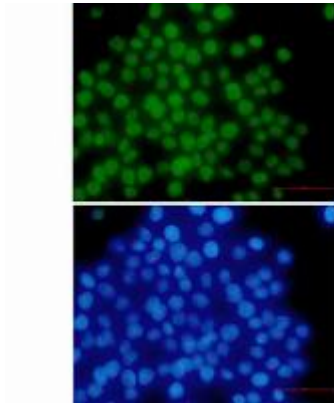
**Conjugation:** Unconjugated

**Modification:** Unmodified

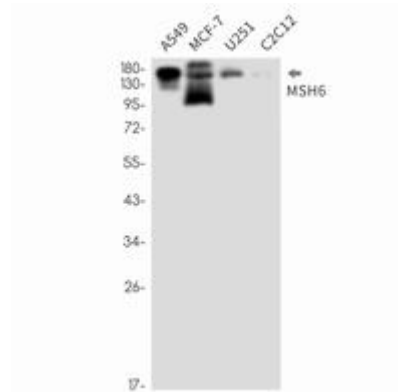
**Constituents:** PBS (without Mg<sup>2+</sup> and Ca<sup>2+</sup>), pH 7.3 containing 50% glycerol, 0.5% BSA and 0.02% sodium azide

**Research Areas:** Epigenetics and Nuclear Signaling

**Storage & Shipping:** Store at -20°C. Avoid repeated freezing and thawing



Immunocytochemistry analysis of MSH6 (green) in HeLa using MSH6 antibody, and DAPI (blue)



Western blot analysis of MSH6 in A549, MCF-7, U251, C2C12 lysates using MSH6 antibody.