

## MSH3 RABBIT PAB

**Cat.#:** S216657

**Product Name:** Anti-MSH3 Rabbit Polyclonal Antibody

**Synonyms:** DUP; FAP4; MRP1

**UNIPROT ID:** P20585 (Gene Accession - BC130436 )

**Background:** The protein encoded by this gene forms a heterodimer with MSH2 to form MutS beta, part of the post-replicative DNA mismatch repair system. MutS beta initiates mismatch repair by binding to a mismatch and then forming a complex with MutL alpha heterodimer. This gene contains a polymorphic 9 bp tandem repeat sequence in the first exon. The repeat is present 6 times in the reference genome sequence and 3-7 repeats have been reported. Defects in this gene are a cause of susceptibility to endometrial cancer. [provided by RefSeq, Mar 2011]

**Immunogen:** Fusion protein of human MSH3

**Applications:** ELISA, IHC

**Recommended Dilutions:** IHC: 50-100; ELISA: 5000-10000

**Host Species:** Rabbit

**Clonality:** Rabbit Polyclonal

**Isotype:** Immunogen-specific rabbit IgG

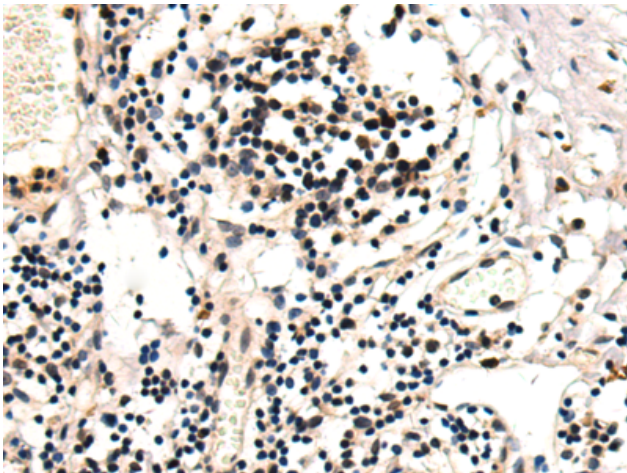
**Purification:** Antigen affinity purification

**Species Reactivity:** Human, Mouse

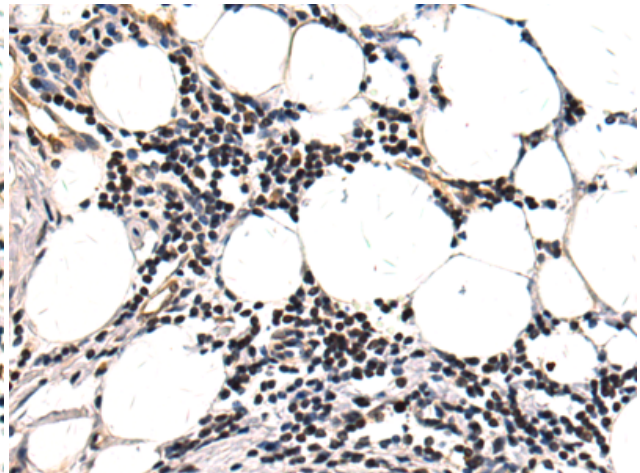
**Constituents:** PBS (without Mg<sup>2+</sup> and Ca<sup>2+</sup>), pH 7.4, 150 mM NaCl, 0.05% Sodium Azide and 40% glycerol

**Research Areas:** Epigenetics and Nuclear Signaling

**Storage & Shipping:** Store at -20°C. Avoid repeated freezing and thawing



Immunohistochemistry analysis of paraffin-embedded Human tonsil tissue using 216657(MSH3 Antibody) at a dilution of 1/120(Nucleus).



Immunohistochemistry analysis of paraffin-embedded Human prostate cancer tissue using 216657(Anti-MSH3 Antibody) at a dilution of 1/120.