

MSH2 RABBIT MAB

Cat.#: N262539

Product Name: Anti-MSH2 Rabbit Monoclonal Antibody

Synonyms: DNA mismatch repair protein Msh2; MutS protein homolog 2

UNIPROT ID: P43246

Background: MSH2 (MutS homologue 2) forms the hMutS- α dimer with MSH6 and is an essential component of the mismatch repair process. hMutS- α is part of the BRCA1-associated surveillance complex (BASC), a complex that also contains BRCA1, MLH1, ATM, BLM, PMS2 proteins and the Rad50-Mre11-NBS1 complex.

Immunogen: A synthetic peptide of human MSH2

Applications: WB,IP

Recommended Dilutions: WB: 1/500-1/1000 IP: 1/20

Host Species: Rabbit

Clonality: Rabbit Monoclonal

Clone ID: R03-1F3

MW: Calculated MW: 105 kDa; Observed MW: 105 kDa

Isotype: IgG

Purification: Affinity Purified

Species Reactivity: Human

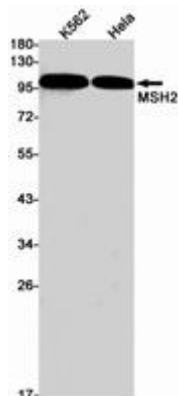
Conjugation: Unconjugated

Modification: Unmodified

Constituents: PBS (without Mg²⁺ and Ca²⁺), pH 7.3 containing 50% glycerol, 0.5% BSA and 0.02% sodium azide

Research Areas: Epigenetics and Nuclear Signaling

Storage & Shipping: Store at -20°C. Avoid repeated freezing and thawing



Western blot analysis of MSH2 in K562, HeLa lysates using MSH2 antibody.



Product Description

Pioneering GTPase and Oncogene Product Development since 2010
