

MRPS18B RABBIT MAB

Cat.#: N263434

Product Name: Anti-MRPS18B Rabbit Monoclonal Antibody

Synonyms: PTD017; S18amt; C6orf14; HSPC183; MRPS18-2; HumanS18 α ; MRP-S18-2

UNIPROT ID: Q9Y676

Background: Mammalian mitochondrial ribosomal proteins are encoded by nuclear genes and help in protein synthesis within the mitochondrion. Mitochondrial ribosomes (mitoribosomes) consist of a small 28S subunit and a large 39S subunit.

Immunogen: Recombinant protein of human MRPS18B

Applications: WB, ICC/IF, IP

Recommended Dilutions: WB: 1/500-1/1000 IF: 1/50-1/200 IP: 1/20

Host Species: Rabbit

Clonality: Rabbit Monoclonal

Clone ID: R05-0C8

MW: Calculated MW: 29 kDa; Observed MW: 29 kDa

Isotype: IgG

Purification: Affinity Purified

Species Reactivity: Human, Mouse, Rat

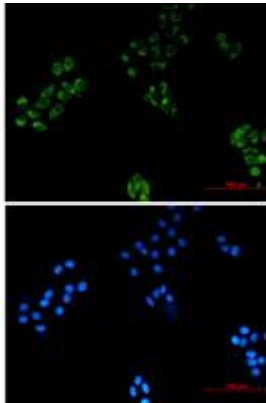
Conjugation: Unconjugated

Modification: Unmodified

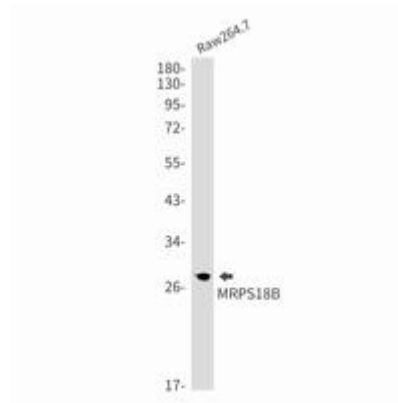
Constituents: PBS (without Mg²⁺ and Ca²⁺), pH 7.3 containing 50% glycerol, 0.5% BSA and 0.02% sodium azide

Research Areas: Epigenetics and Nuclear Signaling

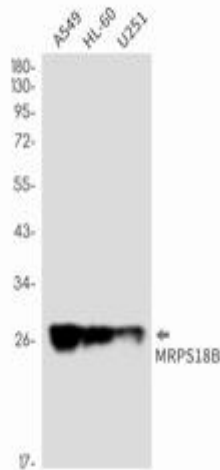
Storage & Shipping: Store at -20°C. Avoid repeated freezing and thawing



Immunocytochemistry analysis of MRPS18B (green) in HeLa using MRPS18B antibody, and DAPI (blue)



Western blot analysis of MRPS18B in Raw264.7 lysates using MRPS18B antibody.



Western blot analysis of MRPS18B in A549, HL-60, U251 lysates using MRPS18B antibody.