

## MRPL35 RABBIT PAB

**Cat.#:** N225132

**Product Name:** Anti-MRPL35 Rabbit pAb

**Synonyms:** MRPL35; BM-007; 39S ribosomal protein L35; mitochondrial; L35mt; MRP-L35

**UNIPROT ID:** Q9NZE8

**Background:** Mammalian mitochondrial ribosomal proteins are encoded by nuclear genes and help in protein synthesis within the mitochondrion. Mitochondrial ribosomes (mitoribosomes) consist of a small 28S subunit and a large 39S subunit.

**Immunogen:** Synthesized peptide derived from MRP-L35 . at AA range: 80-160

**Applications:** WB,ELISA

**Recommended Dilutions:** WB: 1/500-1/1000 ELISA: 1/10000

**Host Species:** Rabbit

**Clonality:** Rabbit Polyclonal

**Clone ID:** -

**MW:** Calculated MW: 22 kDa; Observed MW: 22 kDa

**Isotype:** IgG

**Purification:** Affinity Purified

**Species Reactivity:** Human,Mouse

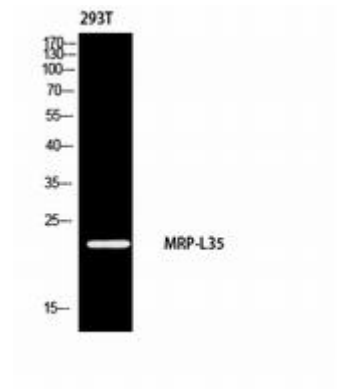
**Conjugation:** Unconjugated

**Modification:** Unmodified

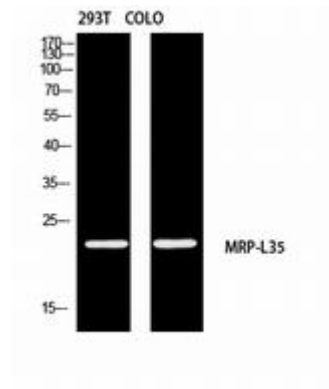
**Constituents:** PBS (without Mg<sup>2+</sup> and Ca<sup>2+</sup>), pH 7.3 containing 50% glycerol, 0.5% BSA and 0.02% sodium azide

**Research Areas:** Tags & Cell Markers

**Storage & Shipping:** Store at -20°C. Avoid repeated freezing and thawing



Western blot analysis of MRPL35 in 293 lysates using MRPL35 antibody.



Western blot analysis of MRPL35 in 293T , COLO lysates using MRPL35 antibody.