

## MRM1 RABBIT PAB

**Cat.#:** S212513

**Product Name:** Anti-MRM1 Rabbit Polyclonal Antibody

**Synonyms:**

**UNIPROT ID:** Q6IN84 (Gene Accession - BC009416 )

**Background:** S-adenosyl-L-methionine-dependent 2'-O-ribose methyltransferase that catalyzes the formation of 2'-O-methylguanosine at position 1145 (Gm1145) in the 16S mitochondrial large subunit ribosomal RNA (mtLSU rRNA), a universally conserved modification in the peptidyl transferase domain of the mtLSU rRNA.

**Immunogen:** Fusion protein of human MRM1

**Applications:** ELISA, WB, IHC

**Recommended Dilutions:** IHC: 50-300;WB: 500-2000;ELISA: 5000-10000

**Host Species:** Rabbit

**Clonality:** Rabbit Polyclonal

**Isotype:** Immunogen-specific rabbit IgG

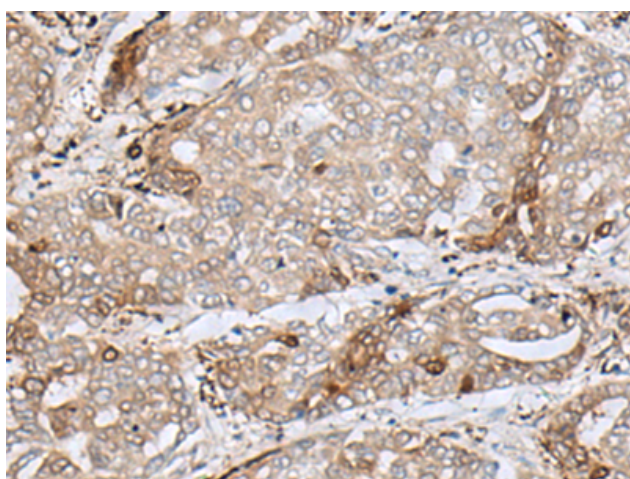
**Purification:** Antigen affinity purification

**Species Reactivity:** Human

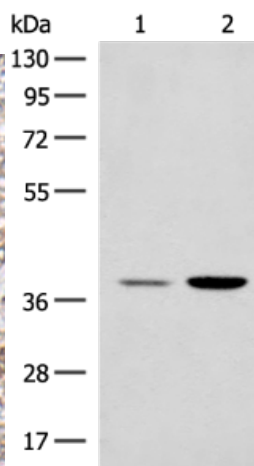
**Constituents:** PBS (without Mg<sup>2+</sup> and Ca<sup>2+</sup>), pH 7.4, 150 mM NaCl, 0.05% Sodium Azide and 40% glycerol

**Research Areas:** Epigenetics and Nuclear Signaling

**Storage & Shipping:** Store at -20°C. Avoid repeated freezing and thawing



Immunohistochemistry analysis of paraffin-embedded Human liver cancer tissue using 212513(MRM1 Antibody) at a dilution of 1/85(Cytoplasm).



Gel: 8%SDS-PAGE, Lysate: 40 µg;  
Lane 1-2: HEPG2 and K562 cell lysates;  
Primary antibody: 212513(MRM1 Antibody) at dilution 1/400;  
Secondary antibody: Goat anti rabbit IgG at 1/8000 dilution;  
Exposure time: 20 seconds