

MPZ RABBIT PAB

Cat.#: S216663

Product Name: Anti-MPZ Rabbit Polyclonal Antibody

Synonyms: P0; CHM; DSS; MPP; CMT1; CMT1B; CMT2I; CMT2J; CMT4E; CMTDI3; CMTDID; HMSNIB

UNIPROT ID: P25189 (Gene Accession - BC006491)

Background: This gene encodes a major structural protein of peripheral myelin. Mutations in this gene result in the autosomal dominant form of Charcot-Marie-Tooth disease type 1 and other polyneuropathies. The myelin sheath is a multi-layered membrane, unique to the nervous system, that functions as an insulator to greatly increase the velocity of axonal impulse conduction. The P0 glycoprotein, absent in the central nervous system,[1] is a major component of the myelin sheath in peripheral nerves. It comprises a large extracellular N-terminal domain, a single transmembrane (TM) region, and a smaller positively charged intracellular domain.

Immunogen: Fusion protein of human MPZ

Applications: ELISA, IHC

Recommended Dilutions: IHC: 15-50; ELISA: 1000-2000

Host Species: Rabbit

Clonality: Rabbit Polyclonal

Isotype: Immunogen-specific rabbit IgG

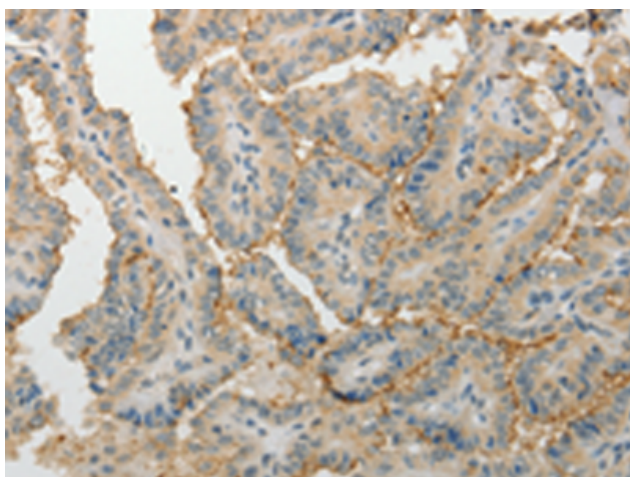
Purification: Antigen affinity purification

Species Reactivity: Human, Mouse, Rat

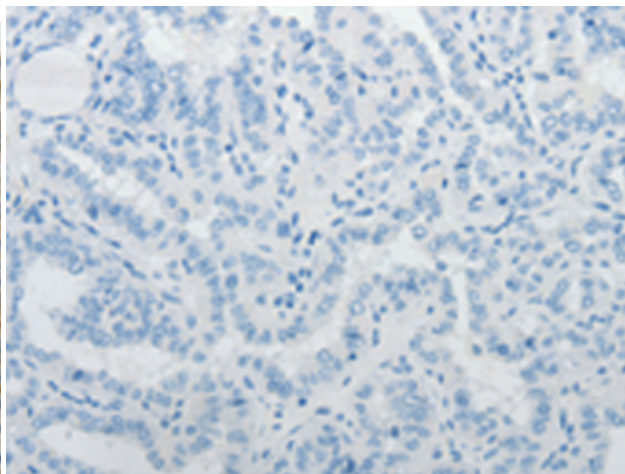
Constituents: PBS (without Mg²⁺ and Ca²⁺), pH 7.4, 150 mM NaCl, 0.05% Sodium Azide and 40% glycerol

Research Areas: Neuroscience

Storage & Shipping: Store at -20°C. Avoid repeated freezing and thawing



Immunohistochemistry analysis of paraffin embedded Human thyroid cancer tissue using 216663(MPZ Antibody) at a dilution of 1/5(Cell membrane, Cytoplasm).



In comparison with the IHC on the left, the same paraffin-embedded Human thyroid cancer tissue is first treated with the fusion protein and then with 216663(Anti-MPZ Antibody) at dilution 1/5.