

MPPED2 RABBIT PAB

Cat.#: S218629

Product Name: Anti-MPPED2 Rabbit Polyclonal Antibody

Synonyms: 239FB; C11orf8

UNIPROT ID: Q15777 (Gene Accession - BC031582)

Background: This gene likely encodes a metallophosphoesterase. The encoded protein may play a role a brain development. Alternatively spliced transcript variants have been described.

Immunogen: Full length fusion protein

Applications: ELISA, IHC

Recommended Dilutions: IHC: 30-150; ELISA: 5000-10000

Host Species: Rabbit

Clonality: Rabbit Polyclonal

Isotype: Immunogen-specific rabbit IgG

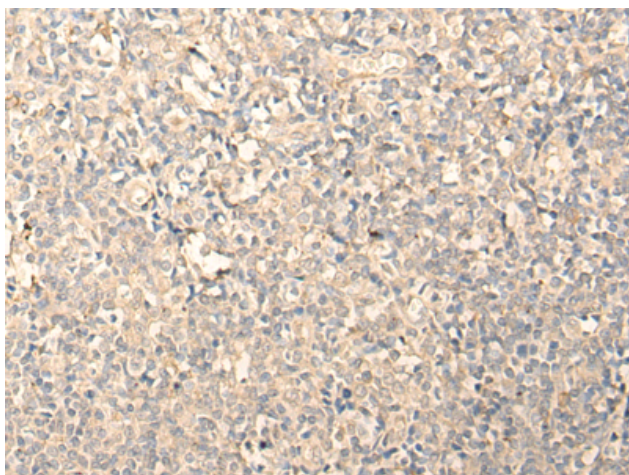
Purification: Antigen affinity purification

Species Reactivity: Human, Mouse, Rat

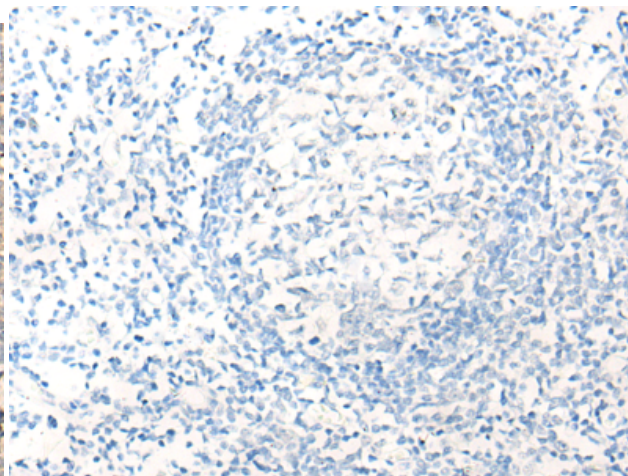
Constituents: PBS (without Mg²⁺ and Ca²⁺), pH 7.4, 150 mM NaCl, 0.05% Sodium Azide and 40% glycerol

Research Areas: Neuroscience

Storage & Shipping: Store at -20°C. Avoid repeated freezing and thawing



Immunohistochemistry analysis of paraffin embedded Human tonsil tissue using 218629(MPPED2 Antibody) at a dilution of 1/25(Cytoplasm and Cell membrane).



In comparison with the IHC on the left, the same paraffin-embedded Human tonsil tissue is first treated with the fusion protein and then with 218629(Anti-MPPED2 Antibody) at dilution 1/25.