

MPG RABBIT PAB

Cat.#: S210950

Product Name: Anti-MPG Rabbit Polyclonal Antibody

Synonyms: AAG; MDG; ADPG; APNG; Mid1; anpg; PIG11; PIG16; CRA36.1

UNIPROT ID: P29372 (Gene Accession - BC014991)

Background: Predicted to enable alkylbase DNA N-glycosylase activity. Predicted to be involved in base-excision repair. Located in cytosol and nucleoplasm.

Immunogen: Fusion protein of human MPG

Applications: ELISA, WB, IHC

Recommended Dilutions: IHC: 100-300;WB: 1000-5000;ELISA: 5000-10000

Host Species: Rabbit

Clonality: Rabbit Polyclonal

Isotype: Immunogen-specific rabbit IgG

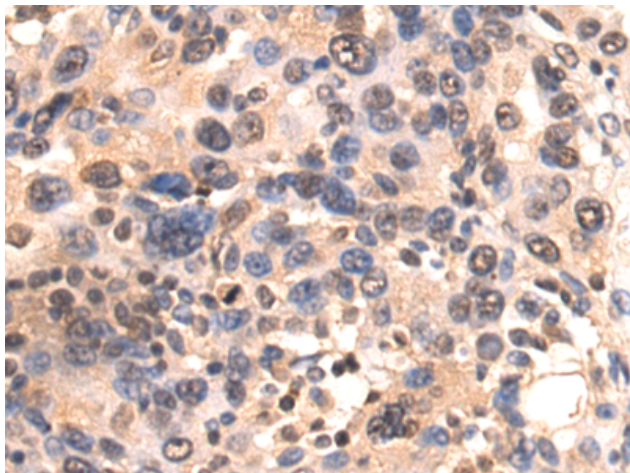
Purification: Antigen affinity purification

Species Reactivity: Human

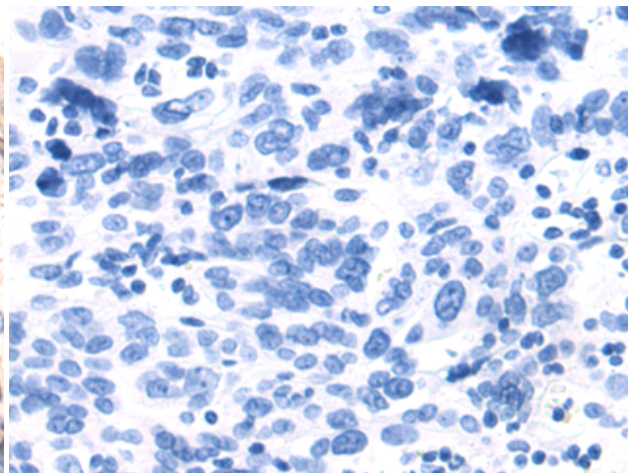
Constituents: PBS (without Mg²⁺ and Ca²⁺), pH 7.4, 150 mM NaCl, 0.05% Sodium Azide and 40% glycerol

Research Areas: Epigenetics and Nuclear Signaling

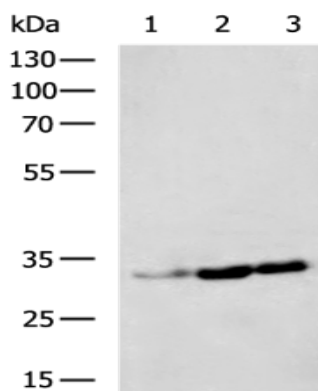
Storage & Shipping: Store at -20°C. Avoid repeated freezing and thawing



Immunohistochemistry analysis of paraffin embedded Human breast cancer tissue using 210950 (MPG Antibody) at a dilution of 1/120 (Nucleus and Cytoplasm).



In comparison with the IHC on the left, the same paraffin-embedded Human breast cancer tissue is first treated with the fusion protein and then with 210950 (Anti-MPG Antibody) at dilution 1/120.



Gel: 8% SDS-PAGE, Lysate: 40 μ g;
Lane 1-3: HepG2, LOVO, 293T cell lysates;
Primary antibody: 210950 (MPG Antibody) at dilution 1/1350;
Secondary antibody: HRP-conjugated Goat anti rabbit IgG at 1/5000 dilution;
Exposure time: 20 seconds