

MPAB RABBIT PAB

Cat.#: S219288

Product Name: Anti-MMAB Rabbit Polyclonal Antibody

Synonyms: ATR; cob; cblB; CFAP23

UNIPROT ID: Q96EY8 (Gene Accession - BC011831)

Background: This gene encodes a protein that catalyzes the final step in the conversion of vitamin B(12) into adenosylcobalamin (AdoCbl), a vitamin B12-containing coenzyme for methylmalonyl-CoA mutase. Mutations in the gene are the cause of vitamin B12-dependent methylmalonic aciduria linked to the cblB complementation group. Alternatively spliced transcript variants have been found.

Immunogen: Fusion protein of human MMAB

Applications: ELISA, WB, IHC

Recommended Dilutions: IHC: 50-200;WB: 1000-5000;ELISA: 5000-10000

Host Species: Rabbit

Clonality: Rabbit Polyclonal

Isotype: Immunogen-specific rabbit IgG

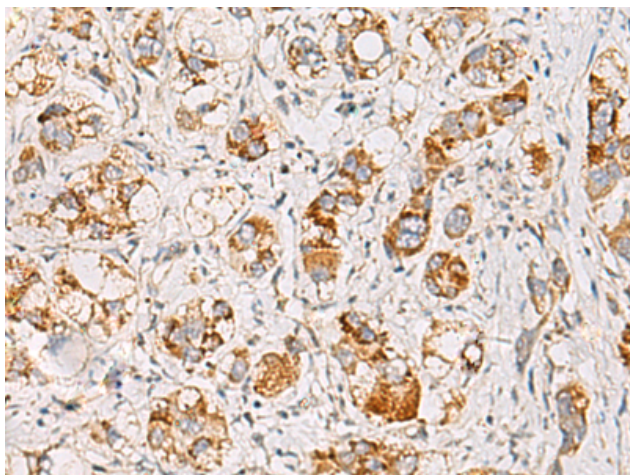
Purification: Antigen affinity purification

Species Reactivity: Human, Mouse

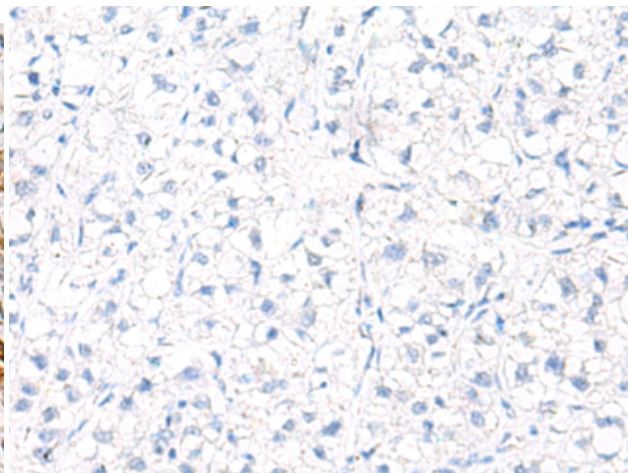
Constituents: PBS (without Mg²⁺ and Ca²⁺), pH 7.4, 150 mM NaCl, 0.05% Sodium Azide and 40% glycerol

Research Areas: Metabolism

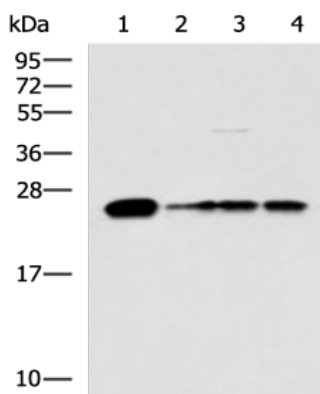
Storage & Shipping: Store at -20°C. Avoid repeated freezing and thawing



Immunohistochemistry analysis of paraffin embedded Human liver cancer tissue using 219288(MMAB Antibody) at a dilution of 1/65(Cytoplasm).



In comparison with the IHC on the left, the same paraffin-embedded Human liver cancer tissue is first treated with the fusion protein and then with 219288(Anti-MMAB Antibody) at dilution 1/65.



Gel: 12%SDS-PAGE, Lysate: 40 µg;
 Lane 1-4: MCF-7, 293T, LO2 and HepG2 cell lysates;
 Primary antibody: 219288(MMAB Antibody) at dilution 1/1400;
 Secondary antibody: HRP-conjugated Goat anti rabbit IgG at 1/5000 dilution;
 Exposure time: 30 seconds