

## MORF4L1 RABBIT PAB

**Cat.#:** S221271

**Product Name:** Anti-MORF4L1 Rabbit Polyclonal Antibody

**Synonyms:** Eaf3; MEAF3; MRG15; FWP006; S863-6; HsT17725; MORFRG15

**UNIPROT ID:** Q9UBU8 (Gene Accession - NP\_996670 )

**Background:** The members of the mortality factor family include mortality factor 4 (MORF4), MORF4L1 (also known as MRG15) and MORF4-related gene X (MRGX). The human MORF4 gene maps to chromosome 4q33-q34.1. MORF4 induces a senescent-like phenotype in complementation group B immortal cell lines. The genes encoding MRG15 and MRGX map to chromosomes 15q24 and Xq22, respectively. MORF4, MORF4L1 and MRGX each contain a C-terminal leucine zipper. An association between MORF4L1, Rb (retinoblastoma tumor suppressor) and PAM14 (protein associated with MORF4L1) suggests a role for MORF4L1 in transcription regulation.

**Immunogen:** Synthetic peptide of human MORF4L1

**Applications:** ELISA, WB, IHC

**Recommended Dilutions:** IHC: 25-100;WB: 500-2000;ELISA: 5000-10000

**Host Species:** Rabbit

**Clonality:** Rabbit Polyclonal

**Isotype:** Immunogen-specific rabbit IgG

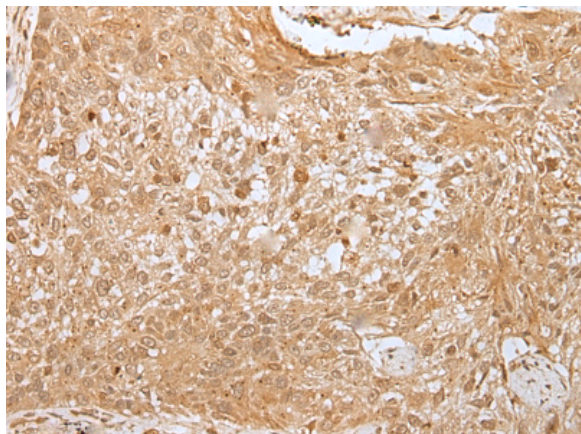
**Purification:** Antigen affinity purification

**Species Reactivity:** Human, Mouse, Rat

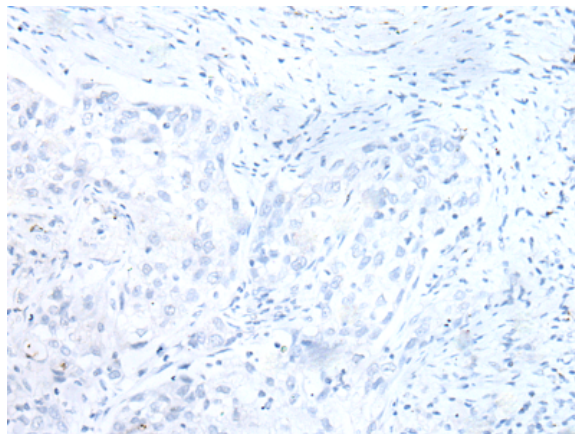
**Constituents:** PBS (without Mg<sup>2+</sup> and Ca<sup>2+</sup>), pH 7.4, 150 mM NaCl, 0.05% Sodium Azide and 40% glycerol

**Research Areas:** Epigenetics and Nuclear Signaling, Cancer

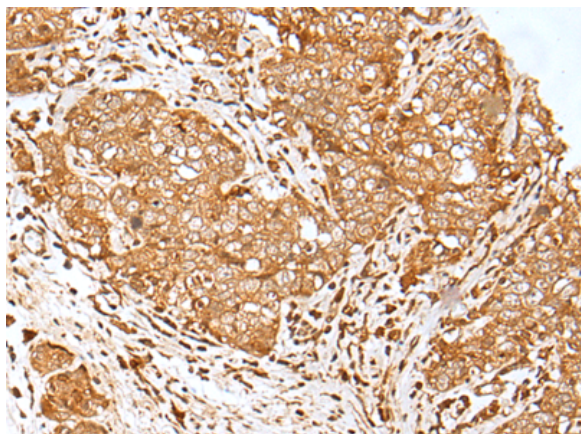
**Storage & Shipping:** Store at -20°C. Avoid repeated freezing and thawing



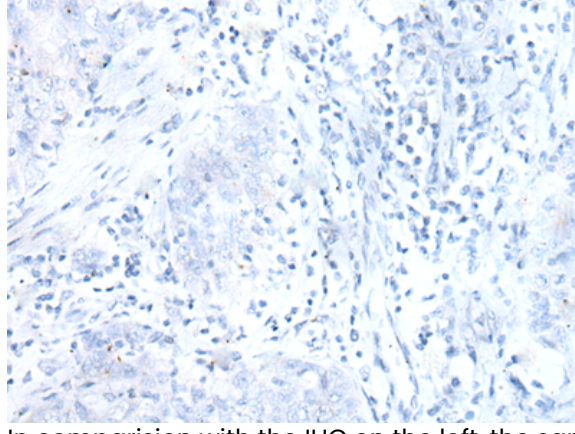
Immunohistochemistry analysis of paraffin embedded Human lung cancer tissue using 221271(MORF4L1 Antibody) at a dilution of 1/30(Nucleus).



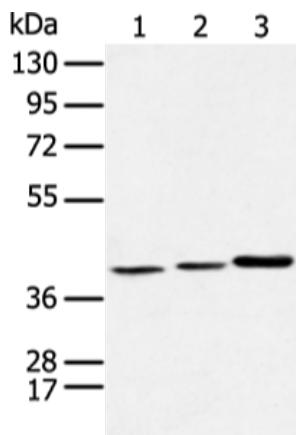
In comparison with the IHC on the left, the same paraffin-embedded Human lung cancer tissue is first treated with the synthetic peptide and then with 221271(Anti-MORF4L1 Antibody) at dilution 1/30.



The image on the left is immunohistochemistry of paraffin-embedded Human esophagus cancer tissue using 221271(Anti-MORF4L1 Antibody) at a dilution of 1/30.



In comparison with the IHC on the left, the same paraffin-embedded Human esophagus cancer tissue is first treated with synthetic peptide and then with D262791(Anti-MORF4L1 Antibody) at dilution 1/30.



Gel: 8%SDS-PAGE, Lysate: 40 µg;  
Lane 1-3: Human fetal liver tissue, Hela cell and Human fetal brain tissue;  
Primary antibody: 221271(MORF4L1 Antibody) at dilution 1/350;  
Secondary antibody: Goat anti rabbit IgG at 1/8000 dilution;  
Exposure time: 10 seconds



# Product Description

Pioneering GTPase and Oncogene Product Development since 2010

---