

MONOMETHYL-HISTONE H3 (LYS4) RABBIT PAB

Cat.#: N226079

Product Name: Anti-MonoMethyl-Histone H3 (Lys4) Rabbit pAb

Synonyms: H3K4me; H3 histone; HIST1H3A; Histone cluster 1; H3a

UNIPROT ID: Q16695

Background: Histones are basic nuclear proteins that are responsible for the nucleosome structure of the chromosomal fiber in eukaryotes. Nucleosomes consist of approximately 146 bp of DNA wrapped around a histone octamer composed of pairs of each of the four core histones (H2A, H2B, H3, and H4). The chromatin fiber is further compacted through the interaction of a linker histone, H1, with the DNA between the nucleosomes to form higher order chromatin structures. This gene is intronless and encodes a member of the histone H3 family. Transcripts from this gene lack polyA tails; instead, they contain a palindromic termination element. This gene is located separately from the other H3 genes that are in the histone gene cluster on chromosome 6p22-p21.3.

Immunogen: A synthetic methylated peptide corresponding to residues surrounding K4 of human histone H3

Applications: WB,IHC-F,IHC-P,ICC/IF

Recommended Dilutions: WB: 1/500-1/1000

Host Species: Rabbit

Clonality: Rabbit Polyclonal

Clone ID: -

MW: Calculated MW: 16 kDa; Observed MW: 16 kDa

Isotype: IgG

Purification: Affinity Purified

Species Reactivity: Human,Mouse,Rat

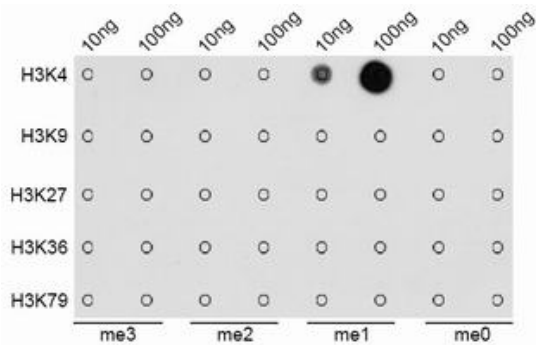
Conjugation: Unconjugated

Modification: Methylated

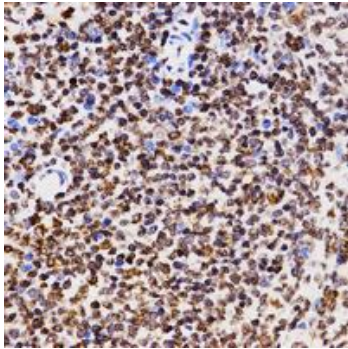
Constituents: PBS (without Mg²⁺ and Ca²⁺), pH 7.3 containing 50% glycerol, 0.5% BSA and 0.02% sodium azide

Research Areas: Epigenetics and Nuclear Signaling

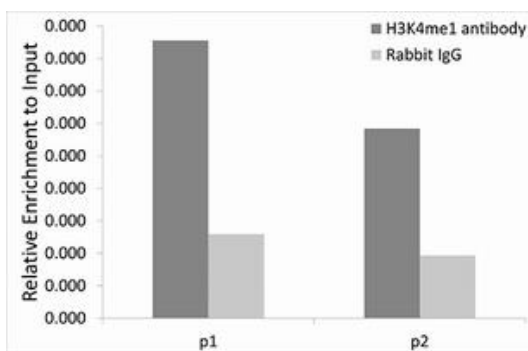
Storage & Shipping: Store at -20°C. Avoid repeated freezing and thawing



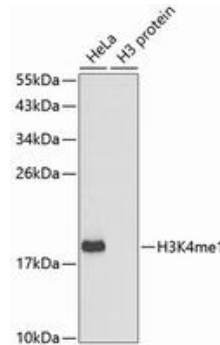
MonoMethyl-Histone H3-K4 antibody
Dot blot analysis of all sorts of methylation peptides using MonoMethyl-Histone H3-K4 antibody.



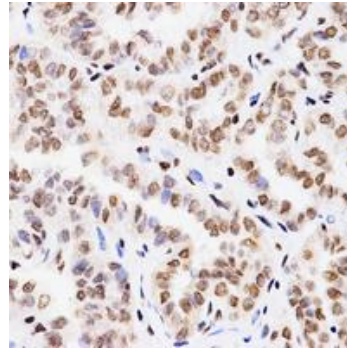
Immunohistochemistry analysis of paraffin-embedded rat spleen using MonoMethyl-Histone H3-K4 antibody. High-pressure and temperature Sodium Citrate pH 6.0 was used for antigen retrieval.



Chromatin Immunoprecipitation
MonoMethyl-Histone H3-K4 pAb
Chromatin immunoprecipitation analysis of extracts of 293T cells, using MonoMethyl-Histone H3-K4 antibody and rabbit IgG. P1 and P2 were located on promoter (GAPDH). The amount of immunoprecipitated DNA was checked by quantitative PCR. Histogram was constructed by the ratio of the immunoprecipitated DNA to the input.



Western blot analysis of MonoMethyl-Histone H3 (Lys4) in various cell lines lysates using MonoMethyl-Histone H3-K4 antibody.



Immunohistochemistry analysis of paraffin-embedded Human thyroid cancer using MonoMethyl-Histone H3-K4 antibody. High-pressure and temperature Sodium Citrate pH 6.0 was used for antigen retrieval.



Product Description

Pioneering GTPase and Oncogene Product Development since 2010
