

## MONOMETHYL-HISTONE H3 (LYS36) RABBIT PAB

**Cat.#:** N225629

**Product Name:** Anti-MonoMethyl-Histone H3 (Lys36) Rabbit pAb

**Synonyms:** H3K36me; H3/j; H3C1; H3C2; H3C3; H3C4; H3C6; H3C7; H3C8; H3FJ; H3C10; H3C11; HIST1H3J

**UNIPROT ID:** P68431

**Background:** H3 Core component of nucleosome. Nucleosomes wrap and compact DNA into chromatin, limiting DNA accessibility to the cellular machineries which require DNA as a template. Histones thereby play a central role in transcription regulation, DNA repair, DNA replication and chromosomal stability.

**Immunogen:** A synthesized peptide derived from human Histone H3 (mono methyl K36)

**Applications:** WB, ICC/IF

**Recommended Dilutions:** WB: 1/500-1/1000 IF: 1/50-1/200

**Host Species:** Rabbit

**Clonality:** Rabbit Polyclonal

**Clone ID:** -

**MW:** Calculated MW: 15 kDa; Observed MW: 15 kDa

**Isotype:** IgG

**Purification:** Affinity Chromatography

**Species Reactivity:** Human, Mouse

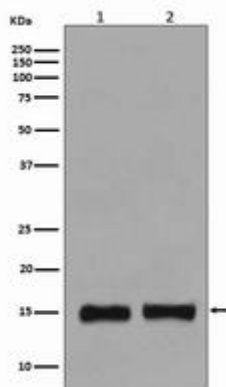
**Conjugation:** Unconjugated

**Modification:** Methylated

**Constituents:** PBS (without Mg<sup>2+</sup> and Ca<sup>2+</sup>), pH 7.3 containing 50% glycerol, 0.5% BSA and 0.02% sodium azide

**Research Areas:** Epigenetics and Nuclear Signaling

**Storage & Shipping:** Store at -20°C. Avoid repeated freezing and thawing



Western blot analysis of Histone H3 (mono methyl K36) in (1) HeLa lysates; (2) NIH/3T3 lysates using MonoMethyl-Histone H3 (Lys36) antibody.