

MONOAMINE OXIDASE A RABBIT MAB

Cat.#: N262532

Product Name: Anti-Monoamine Oxidase A Rabbit Monoclonal Antibody

Synonyms: MAOA; Amine oxidase [flavin-containing] A; Monoamine oxidase type A; MAO-A

UNIPROT ID: P21397

Background: Catalyzes the oxidative deamination of biogenic and xenobiotic amines and has important functions in the metabolism of neuroactive and vasoactive amines in the central nervous system and peripheral tissues.

Immunogen: A synthetic peptide of human Monoamine Oxidase A

Applications: WB,IHC-P

Recommended Dilutions: WB: 1/500-1/1000 IHC: 1/50-1/100

Host Species: Rabbit

Clonality: Rabbit Monoclonal

Clone ID: R07-913

MW: Calculated MW: 60 kDa; Observed MW: 60 kDa

Isotype: IgG

Purification: Affinity Purified

Species Reactivity: Human,Mouse,Rat

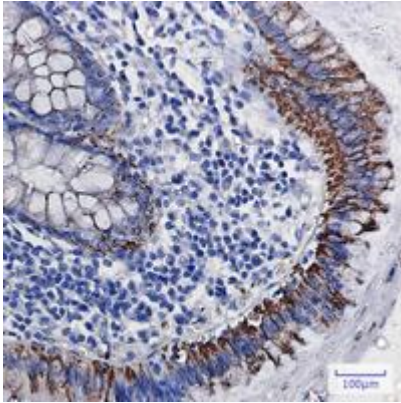
Conjugation: Unconjugated

Modification: Unmodified

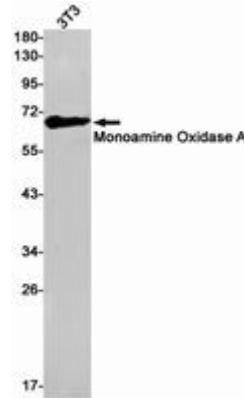
Constituents: PBS (without Mg²⁺ and Ca²⁺), pH 7.3 containing 50% glycerol, 0.5% BSA and 0.02% sodium azide

Research Areas: Neuroscience

Storage & Shipping: Store at -20°C. Avoid repeated freezing and thawing



Immunohistochemistry analysis of paraffin-embedded Human colon cancer using Monoamine Oxidase A/MAOA antibody. High-pressure and temperature Sodium Citrate pH 6.0 was used for antigen retrieval.



Western blot analysis of Monoamine Oxidase A in C6 lysates using Monoamine Oxidase A antibody.