

## MOG RABBIT MAB

**Cat.#:** N262559

**Product Name:** Anti-MOG Rabbit Monoclonal Antibody

**Synonyms:** BTN6; BTNL1; MOGIG2; NRCLP7

**UNIPROT ID:** Q16653

**Background:** Mediates homophilic cell-cell adhesion (By similarity). Minor component of the myelin sheath. May be involved in completion and/or maintenance of the myelin sheath and in cell-cell communication.

**Immunogen:** A synthetic peptide of human Myelin oligodendrocyte glycoprotein

**Applications:** WB, ICC/IF

**Recommended Dilutions:** WB: 1/500-1/1000 IF: 1/50-1/200

**Host Species:** Rabbit

**Clonality:** Rabbit Monoclonal

**Clone ID:** R04-4K8

**MW:** Calculated MW: 28 kDa; Observed MW: 28 kDa

**Isotype:** IgG

**Purification:** Affinity Purified

**Species Reactivity:** Rat

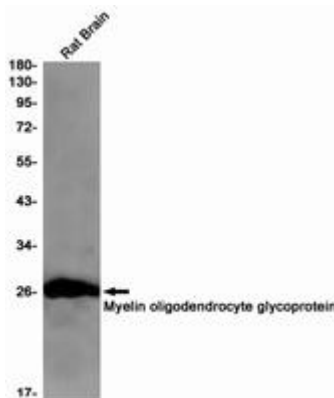
**Conjugation:** Unconjugated

**Modification:** Unmodified

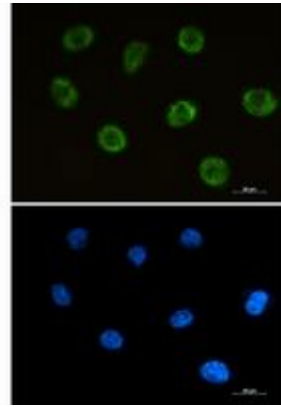
**Constituents:** PBS (without Mg<sup>2+</sup> and Ca<sup>2+</sup>), pH 7.3 containing 50% glycerol, 0.5% BSA and 0.02% sodium azide

**Research Areas:** Neuroscience

**Storage & Shipping:** Store at -20°C. Avoid repeated freezing and thawing



Western blot analysis of Myelin oligodendrocyte glycoprotein in rat Brain lysates using Myelin oligodendrocyte glycoprotein antibody.



Immunocytochemistry analysis of MOG (green) in SH-SY5Y using MOG antibody, and DAPI (blue).