

## MOB1A RABBIT PAB

**Cat.#:** S220720

**Product Name:** Anti-MOB1A Rabbit Polyclonal Antibody

**Synonyms:** MOB1; MATS1; Mob4B; C2orf6; MOBK1B; MOBKL1B

**UNIPROT ID:** Q9H8S9 (Gene Accession - NP\_060691 )

**Background:** MOB1 was first identified in yeast as a protein that binds to Mps with essential roles in the completion of mitosis and the maintenance of ploidy. Its Drosophila and mammalian homologs, Mats and MOB1, respectively, are involved in the Hippo signaling tumor suppressor pathway, which plays a critical role in organ size regulation and which has been implicated in cancer development . There are two MOB1 proteins in humans, MOB1 $\alpha$  and MOB1 $\beta$ , that are encoded by two different genes but which have greater than 95% amino acid sequence identity.

**Immunogen:** Synthetic peptide of human MOB1A

**Applications:** ELISA, WB, IHC

**Recommended Dilutions:** IHC: 50-200;WB: 500-2000;ELISA: 2000-5000

**Host Species:** Rabbit

**Clonality:** Rabbit Polyclonal

**Isotype:** Immunogen-specific rabbit IgG

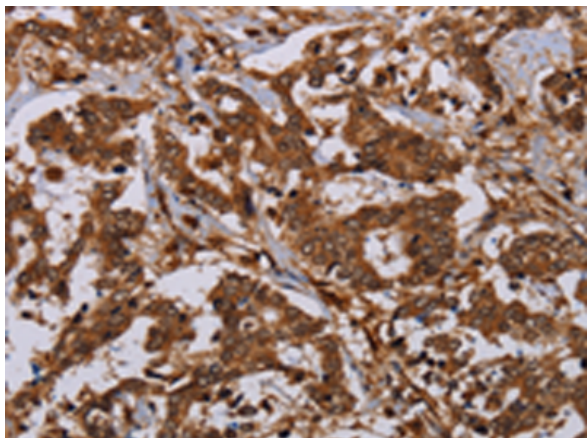
**Purification:** Antigen affinity purification

**Species Reactivity:** Human, Mouse, Rat

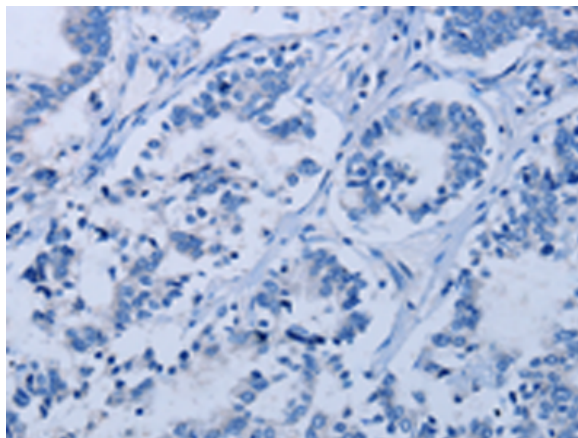
**Constituents:** PBS (without Mg<sup>2+</sup> and Ca<sup>2+</sup>), pH 7.4, 150 mM NaCl, 0.05% Sodium Azide and 40% glycerol

**Research Areas:** Signal Transduction, Cancer

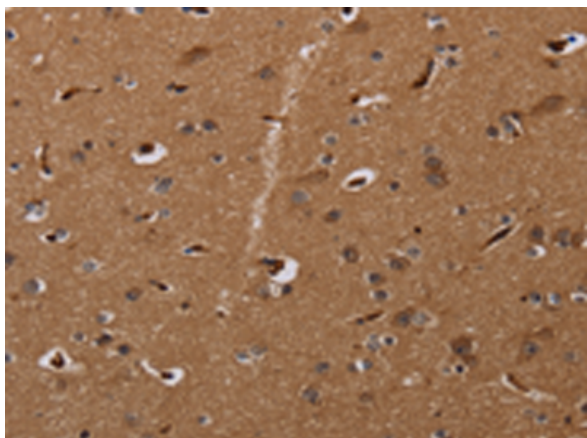
**Storage & Shipping:** Store at -20°C. Avoid repeated freezing and thawing



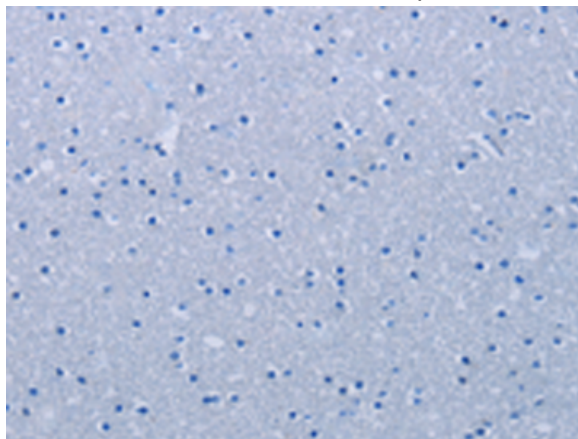
Immunohistochemistry analysis of paraffin embedded Human liver cancer tissue using 220720(MOB1A Antibody) at a dilution of 1/30(Cytoplasm and Nucleus).



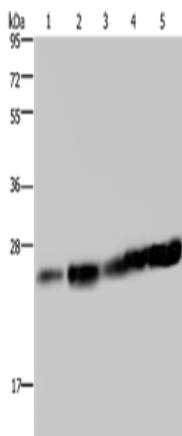
In comparison with the IHC on the left, the same paraffin-embedded Human liver cancer tissue is first treated with the synthetic peptide and then with 220720(Anti-MOB1A Antibody) at dilution 1/30.



The image on the left is immunohistochemistry of paraffin-embedded Human brain tissue using 220720(Anti-MOB1A Antibody) at a dilution of 1/30.



In comparison with the IHC on the left, the same paraffin-embedded Human brain tissue is first treated with synthetic peptide and then with D261918(Anti-MOB1A Antibody) at dilution 1/30.



Gel: 10%SDS-PAGE, Lysate: 40 µg;  
Lane 1-5: Hela cells, Jurkat cells, mouse liver tissue, K562 cells, A375 cells;  
Primary antibody: 220720(MOB1A Antibody) at dilution 1/200;  
Secondary antibody: Goat anti rabbit IgG at 1/8000 dilution;  
Exposure time: 10 seconds



# Product Description

Pioneering GTPase and Oncogene Product Development since 2010

---