

MMP8 RABBIT PAB

Cat.#: S219918

Product Name: Anti-MMP8 Rabbit Polyclonal Antibody

Synonyms: HNC, CLG1, MMP-8, PMNL-CL

UNIPROT ID: P22894 (Gene Accession - NP_002415)

Background: Proteins of the matrix metalloproteinase (MMP) family are involved in the breakdown of extracellular matrix in normal physiological processes, such as embryonic development, reproduction, and tissue remodeling, as well as in disease processes, such as arthritis and metastasis. Most MMP's are secreted as inactive proproteins which are activated when cleaved by extracellular proteinases. However, the enzyme encoded by this gene is stored in secondary granules within neutrophils and is activated by autolytic cleavage. Its function is degradation of type I, II and III collagens. The gene is part of a cluster of MMP genes which localize to chromosome 11q22.3.

Immunogen: Synthetic peptide of human MMP8

Applications: ELISA, WB, IHC

Recommended Dilutions: IHC: 25-100;WB: 500-2000;ELISA: 2000-5000

Host Species: Rabbit

Clonality: Rabbit Polyclonal

Isotype: Immunogen-specific rabbit IgG

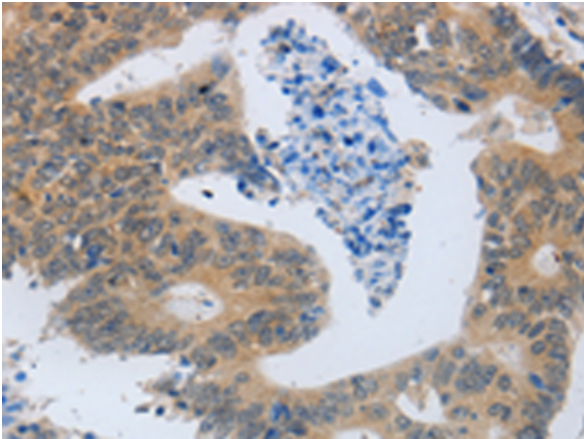
Purification: Antigen affinity purification

Species Reactivity: Human

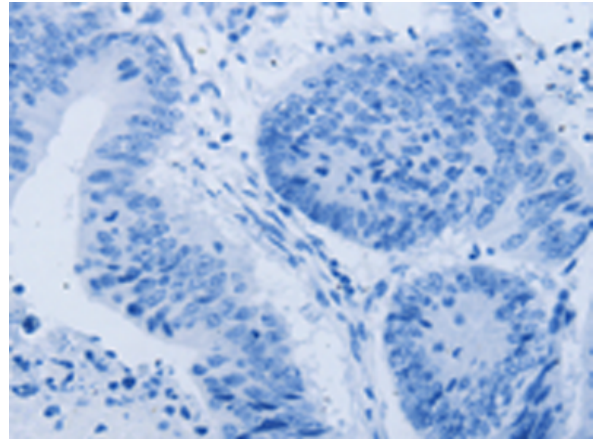
Constituents: PBS (without Mg²⁺ and Ca²⁺), pH 7.4, 150 mM NaCl, 0.05% Sodium Azide and 40% glycerol

Research Areas: Signal Transduction, Cancer, Cell Biology, Cardiovascular

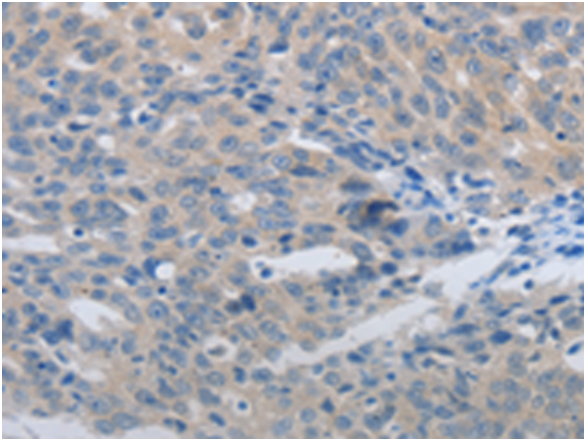
Storage & Shipping: Store at -20°C. Avoid repeated freezing and thawing



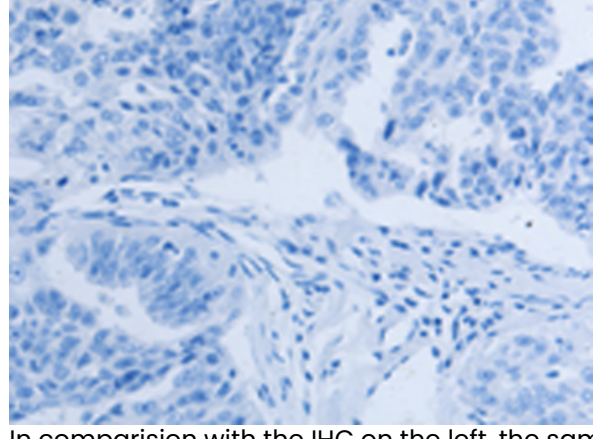
Immunohistochemistry analysis of paraffin embedded Human colon cancer tissue using 219918(MMP8 Antibody) at a dilution of 1/45(Cytoplasm).



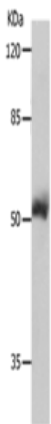
In comparison with the IHC on the left, the same paraffin-embedded Human colon cancer tissue is first treated with the synthetic peptide and then with 219918(Anti-MMP8 Antibody) at dilution 1/45.



The image on the left is immunohistochemistry of paraffin-embedded Human ovarian cancer tissue using 219918(Anti-MMP8 Antibody) at a dilution of 1/45.



In comparison with the IHC on the left, the same paraffin-embedded Human ovarian cancer tissue is first treated with synthetic peptide and then with D260624(Anti-MMP8 Antibody) at dilution 1/45.



Gel: 8%SDS-PAGE, Lysate: 40 µg;
 Lane: 231 cells;
 Primary antibody: 219918(MMP8 Antibody) at dilution 1/800;
 Secondary antibody: Goat anti rabbit IgG at 1/8000 dilution;
 Exposure time: 10 seconds



Product Description

Pioneering GTPase and Oncogene Product Development since 2010
