

## MMP3 RABBIT PAB

**Cat.#:** N225575

**Product Name:** Anti-MMP3 Rabbit pAb

**Synonyms:** MMP3; STMY1; Stromelysin-1; SL-1; Matrix metalloproteinase-3; MMP-3; Transin-1

**UNIPROT ID:** P08254

**Background:** MMP3 Can degrade fibronectin, laminin, gelatins of type I, III, IV, and V; collagens III, IV, X, and IX, and cartilage proteoglycans. Activates procollagenase. Belongs to the peptidase M10A family.

**Immunogen:** A synthesized peptide derived from human MMP3

**Applications:** WB,IHC-P,ICC/IF

**Recommended Dilutions:** WB: 1/500-1/1000 IHC: 1/50-1/100 IF: 1/50-1/200

**Host Species:** Rabbit

**Clonality:** Rabbit Polyclonal

**Clone ID:** -

**MW:** Calculated MW: 54 kDa; Observed MW: 50 kDa

**Isotype:** IgG

**Purification:** Affinity Chromatography

**Species Reactivity:** Human,Mouse,Rat

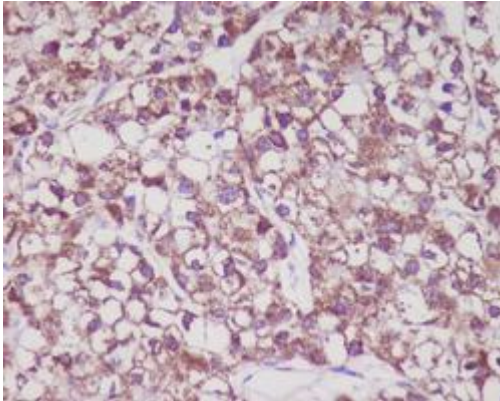
**Conjugation:** Unconjugated

**Modification:** Unmodified

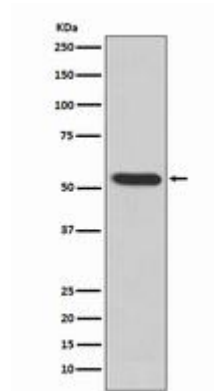
**Constituents:** PBS (without Mg<sup>2+</sup> and Ca<sup>2+</sup>), pH 7.3 containing 50% glycerol, 0.5% BSA and 0.02% sodium azide

**Research Areas:** Cardiovascular

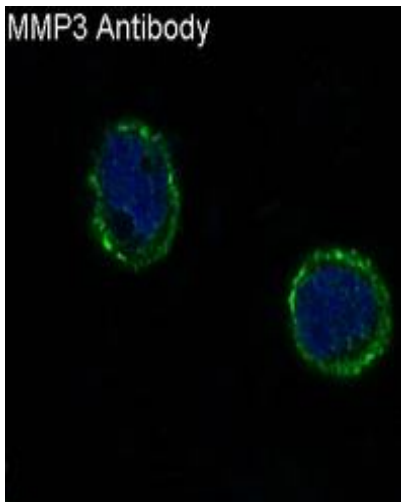
**Storage & Shipping:** Store at -20°C. Avoid repeated freezing and thawing



Immunohistochemistry analysis of paraffin-embedded Human liver cancer using MMP3 antibody. High-pressure and temperature Sodium Citrate pH 6.0 was used for antigen retrieval.



Western blot analysis of MMP3 in MMP3 recombinant protein using MMP3 antibody.



Immunofluorescence analysis of MMP3 in HeLa using MMP3 antibody.