

## MMP3 RABBIT PAB

**Cat.#:** N225371

**Product Name:** Anti-MMP3 Rabbit pAb

**Synonyms:** MMP3; STMY1; Stromelysin-1; SL-1; Matrix metalloproteinase-3; MMP-3; Transin-1

**UNIPROT ID:** P08254

**Background:** MMP3 Can degrade fibronectin, laminin, gelatins of type I, III, IV, and V; collagens III, IV, X, and IX, and cartilage proteoglycans. Activates procollagenase. Belongs to the peptidase M10A family.

**Immunogen:** The antiserum was produced against synthesized peptide derived from human MMP-3. AA range:421-470

**Applications:** WB,IHC-F,IHC-P,ICC/IF,ELISA

**Recommended Dilutions:** WB: 1/500-1/1000 IHC: 1/50-1/100 IF: 1/50-1/200 ELISA: 1/10000

**Host Species:** Rabbit

**Clonality:** Rabbit Polyclonal

**Clone ID:** -

**MW:** Calculated MW: 54 kDa; Observed MW: 54 kDa

**Isotype:** IgG

**Purification:** Affinity Chromatography

**Species Reactivity:** Human,Mouse,Rat

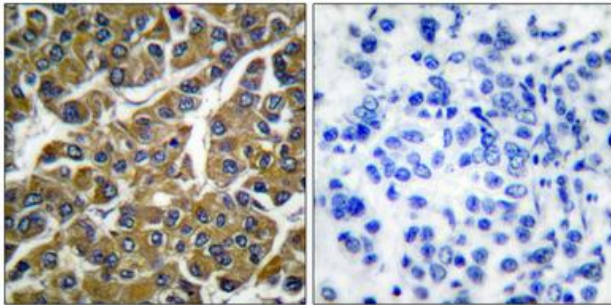
**Conjugation:** Unconjugated

**Modification:** Unmodified

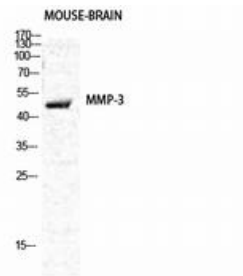
**Constituents:** PBS (without Mg<sup>2+</sup> and Ca<sup>2+</sup>), pH 7.3 containing 50% glycerol, 0.5% BSA and 0.02% sodium azide

**Research Areas:** Cardiovascular

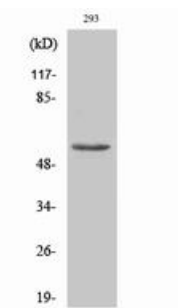
**Storage & Shipping:** Store at -20°C. Avoid repeated freezing and thawing



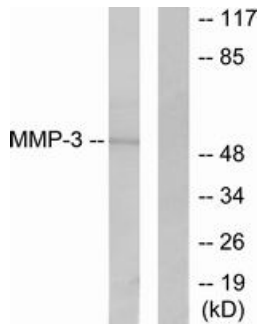
Immunohistochemistry analysis of paraffin-embedded Human breast carcinoma tissue using MMP3 antibody. High-pressure and temperature Sodium Citrate pH 6.0 was used for antigen retrieval. Sample with blocking peptide on the right.



Western blot analysis of MMP3 in various lysates using MMP3 antibody.



Western blot analysis of MMP3 in 293 lysates using MMP3 antibody.



Western blot analysis of MMP3 in 293 lysates using MMP3 antibody. The lane on the right is blocked with the synthesized peptide.