

## MMP28 RABBIT PAB

**Cat.#:** S216652

**Product Name:** Anti-MMP28 Rabbit Polyclonal Antibody

**Synonyms:** MM28; MMP25; MMP-25; MMP-28; EPILYSIN

**UNIPROT ID:** Q9H239 (Gene Accession - BC002631)

**Background:** Proteins of the matrix metalloproteinase (MMP) family are involved in the breakdown of extracellular matrix for both normal physiological processes, such as embryonic development, reproduction and tissue remodeling, and disease processes, such as asthma and metastasis. This gene encodes a secreted enzyme that degrades casein. Its expression pattern suggests that it plays a role in tissue homeostasis and in wound repair. Alternative splicing of this gene results in multiple transcript variants. [provided by RefSeq, Apr 2014]

**Immunogen:** Fusion protein of human MMP28

**Applications:** ELISA, WB, IHC

**Recommended Dilutions:** IHC: 50-100;WB: 200-1000;ELISA: 2000-5000

**Host Species:** Rabbit

**Clonality:** Rabbit Polyclonal

**Isotype:** Immunogen-specific rabbit IgG

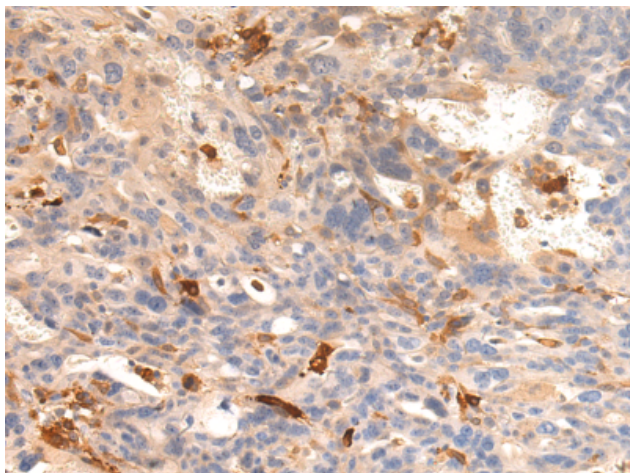
**Purification:** Antigen affinity purification

**Species Reactivity:** Human, Mouse

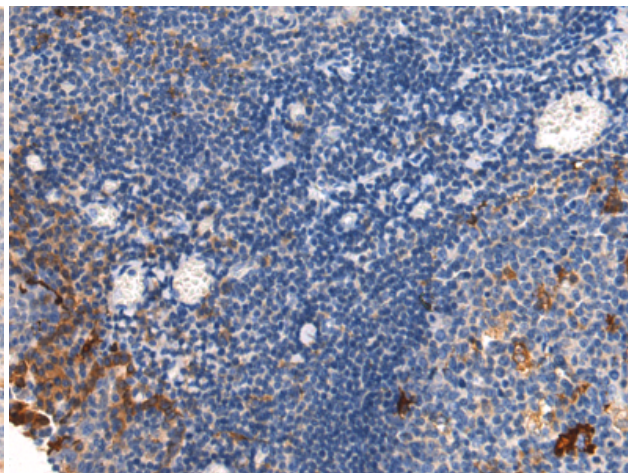
**Constituents:** PBS (without Mg<sup>2+</sup> and Ca<sup>2+</sup>), pH 7.4, 150 mM NaCl, 0.05% Sodium Azide and 40% glycerol

**Research Areas:** Signal Transduction, Cell Biology

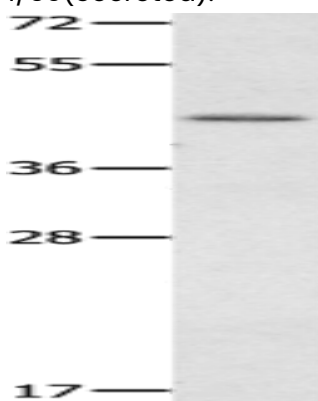
**Storage & Shipping:** Store at -20°C. Avoid repeated freezing and thawing



Immunohistochemistry analysis of paraffin-embedded Human breast cancer tissue using 216652(MMP28 Antibody) at a dilution of 1/50(Secreted).



Immunohistochemistry analysis of paraffin-embedded Human tonsil tissue using 216652(Anti-MMP28 Antibody) at a dilution of 1/50.



Gel: 10%SDS-PAGE, Lysate: 50 µg;  
Lane: Mouse heart tissue;  
Primary antibody: 216652(MMP28 Antibody) at dilution 1/400;  
Secondary antibody: Goat anti rabbit IgG at 1/8000 dilution;  
Exposure time: 5 minutes