

## MMP14 RABBIT MAB

**Cat.#:** N261560

**Product Name:** Anti-MMP14 Rabbit Monoclonal Antibody

**Synonyms:** MMP-14; MMP-X1; MT-MMP; MT1MMP; MTMMP1; WNCHRS; MT1-MMP; MT-MMP 1

**UNIPROT ID:** P50281

**Background:** MMP14 Seems to specifically activate progelatinase A. May thus trigger invasion by tumor cells by activating progelatinase A on the tumor cell surface. Belongs to the peptidase M10A family.

**Immunogen:** A synthetic peptide of human MMP14

**Applications:** WB,IHC-P,IP

**Recommended Dilutions:** WB: 1/500-1/1000 IHC: 1/50-1/100 IP: 1/20

**Host Species:** Rabbit

**Clonality:** Rabbit Monoclonal

**Clone ID:** R05-6H5

**MW:** Calculated MW: 66 kDa; Observed MW: 66 kDa

**Isotype:** IgG

**Purification:** Affinity Purified

**Species Reactivity:** Human,Hamster

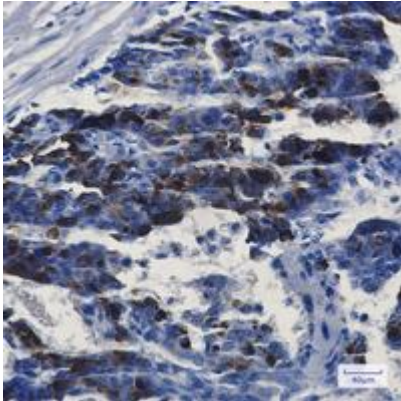
**Conjugation:** Unconjugated

**Modification:** Unmodified

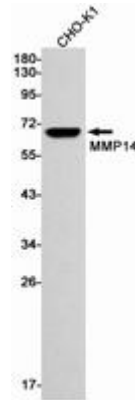
**Constituents:** PBS (without Mg<sup>2+</sup> and Ca<sup>2+</sup>), pH 7.3 containing 50% glycerol, 0.5% BSA and 0.02% sodium azide

**Research Areas:** Cardiovascular

**Storage & Shipping:** Store at -20°C. Avoid repeated freezing and thawing



Immunohistochemistry analysis of paraffin-embedded Human breast cancer using MMP14 antibody. High-pressure and temperature Sodium Citrate pH 6.0 was used for antigen retrieval.



Western blot analysis of MMP14 in CHO-K1 lysates using MMP14 antibody.