

MMP12 RABBIT PAB

Cat.#: S216649

Product Name: Anti-MMP12 Rabbit Polyclonal Antibody

Synonyms: ME; HME; MME; MMP-12

UNIPROT ID: P39900 (Gene Accession - BC112301)

Background: Proteins of the matrix metalloproteinase (MMP) family are involved in the breakdown of extracellular matrix in normal physiological processes, such as embryonic development, reproduction, and tissue remodeling, as well as in disease processes, such as arthritis and metastasis. Most MMP's are secreted as inactive proproteins which are activated when cleaved by extracellular proteinases. It is thought that the protein encoded by this gene is cleaved at both ends to yield the active enzyme, but this processing has not been fully described. The enzyme degrades soluble and insoluble elastin.

Immunogen: Fusion protein of human MMP12

Applications: ELISA, WB, IHC

Recommended Dilutions: IHC: 50-200;WB: 200-1000;ELISA: 5000-10000

Host Species: Rabbit

Clonality: Rabbit Polyclonal

Isotype: Immunogen-specific rabbit IgG

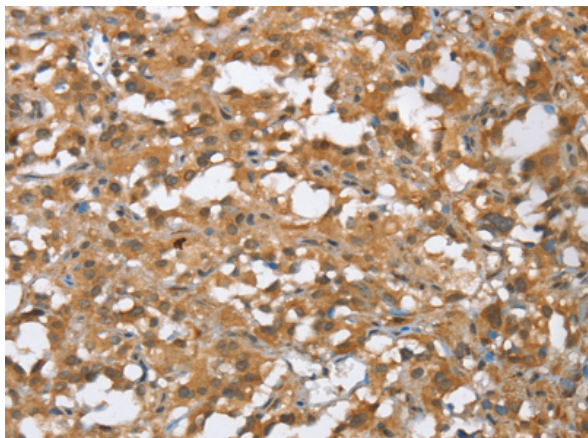
Purification: Antigen affinity purification

Species Reactivity: Human

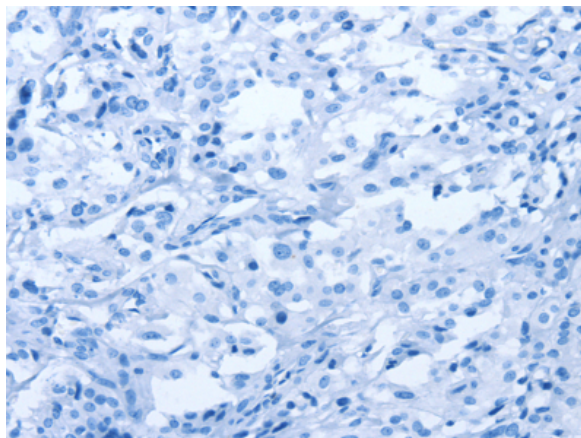
Constituents: PBS (without Mg²⁺ and Ca²⁺), pH 7.4, 150 mM NaCl, 0.05% Sodium Azide and 40% glycerol

Research Areas: Signal Transduction, Cardiovascular, Cancer

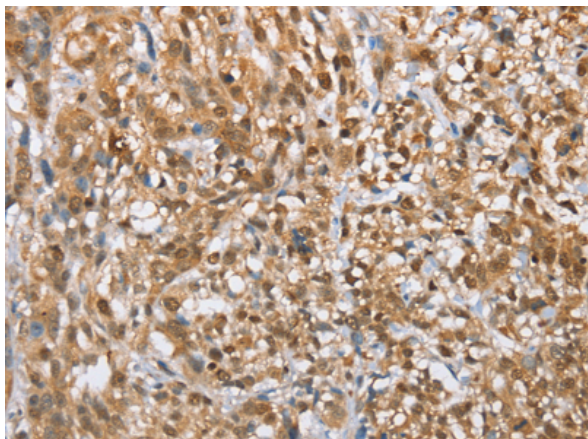
Storage & Shipping: Store at -20°C. Avoid repeated freezing and thawing



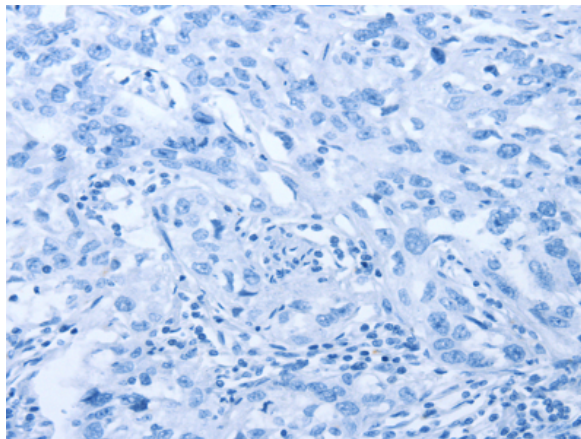
Immunohistochemistry analysis of paraffin embedded Human thyroid cancer tissue using 216649(MMP12 Antibody) at a dilution of 1/60(Cytoplasm).



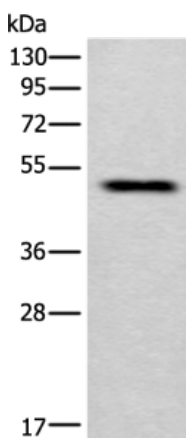
In comparison with the IHC on the left, the same paraffin-embedded Human thyroid cancer tissue is first treated with the fusion protein and then with 216649(Anti-MMP12 Antibody) at dilution 1/60.



The image on the left is immunohistochemistry of paraffin-embedded Human esophagus cancer tissue using 216649(Anti-MMP12 Antibody) at a dilution of 1/60.



In comparison with the IHC on the left, the same paraffin-embedded Human esophagus cancer tissue is first treated with fusion protein and then with D220989(Anti-MMP12 Antibody) at dilution 1/60.



Gel: 6%SDS-PAGE, Lysate: 40 µg;
Lane: 293T cell lysate;
Primary antibody: 216649(MMP12 Antibody) at dilution 1/250;
Secondary antibody: Goat anti rabbit IgG at 1/8000 dilution;
Exposure time: 90 seconds



Product Description

Pioneering GTPase and Oncogene Product Development since 2010
