

MMP12 RABBIT MAB

Cat.#: N262526

Product Name: Anti-MMP12 Rabbit Monoclonal Antibody

Synonyms: Macrophage metalloelastase; MME; 3.4.24.65; Macrophage elastase; ME; hME; Matrix metalloproteinase-12; MMP-12; MMP12; HME

UNIPROT ID: P39900

Background: MMP-12 lacks a transmembrane domain and furin cleavage site. The zymogen for MMP-12 is about 54 kDa, and is quickly activated to the 45 kDa form, and this breaks down to cascade of active forms, ending with the common 22 kDa form. Stimulated macrophages produce MMP-12; it has also been found in osteosarcoma cells, synovial fibroblasts and lung fibroblasts.

Immunogen: A synthetic peptide of human MMP12

Applications: WB,IP

Recommended Dilutions: WB: 1/500-1/1000 IP: 1/20

Host Species: Rabbit

Clonality: Rabbit Monoclonal

Clone ID: R03-2B9

MW: Calculated MW: 54 kDa; Observed MW: 54,45 kDa

Isotype: IgG

Purification: Affinity Purified

Species Reactivity: Human,Rat,Hamster

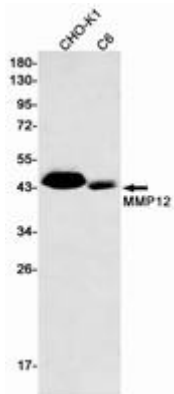
Conjugation: Unconjugated

Modification: Unmodified

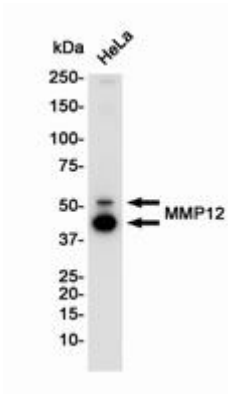
Constituents: PBS (without Mg²⁺ and Ca²⁺), pH 7.3 containing 50% glycerol, 0.5% BSA and 0.02% sodium azide

Research Areas: Cardiovascular

Storage & Shipping: Store at -20°C. Avoid repeated freezing and thawing



Western blot analysis of MMP12 in CHO-K1, C6 lysates using MMP12 antibody.



Western blot analysis of MMP12 in HeLa lysates using MMP12 antibody.