

MMP11 RABBIT PAB

Cat.#: S219922

Product Name: Anti-MMP11 Rabbit Polyclonal Antibody

Synonyms: ST3, SL-3, STMY3

UNIPROT ID: P24347 (Gene Accession - AAH57788)

Background: Proteins of the matrix metalloproteinase (MMP) family are involved in the breakdown of extracellular matrix in normal physiological processes, such as embryonic development, reproduction, and tissue remodeling, as well as in disease processes, such as arthritis and metastasis. Most MMP's are secreted as inactive proproteins which are activated when cleaved by extracellular proteinases. However, the enzyme encoded by this gene is activated intracellularly by furin within the constitutive secretory pathway. Also in contrast to other MMP's, this enzyme cleaves alpha 1-proteinase inhibitor but weakly degrades structural proteins of the extracellular matrix.

Immunogen: Synthetic peptide of human MMP11

Applications: ELISA, WB, IHC

Recommended Dilutions: IHC: 50-200;WB: 500-2000;ELISA: 1000-5000

Host Species: Rabbit

Clonality: Rabbit Polyclonal

Isotype: Immunogen-specific rabbit IgG

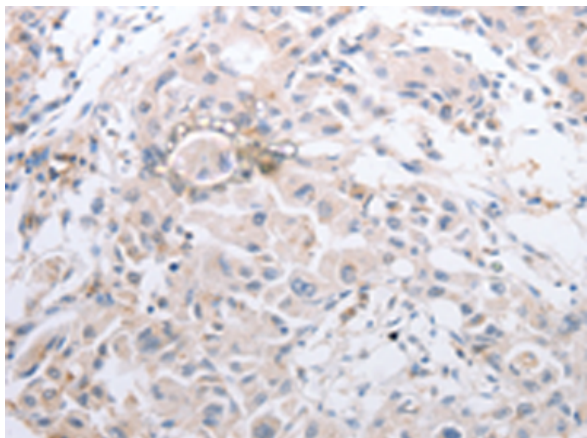
Purification: Antigen affinity purification

Species Reactivity: Human, Mouse

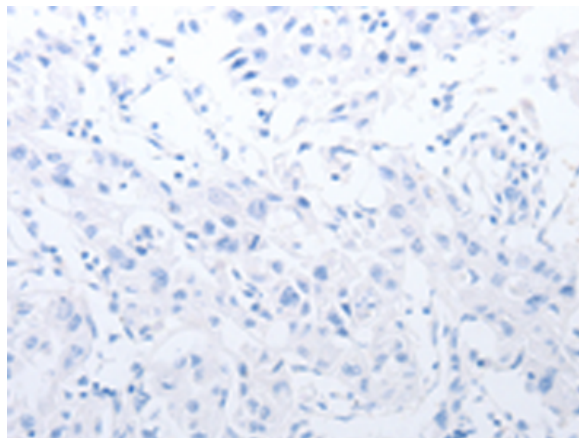
Constituents: PBS (without Mg²⁺ and Ca²⁺), pH 7.4, 150 mM NaCl, 0.05% Sodium Azide and 40% glycerol

Research Areas: Signal Transduction, Cardiovascular, Cell Biology

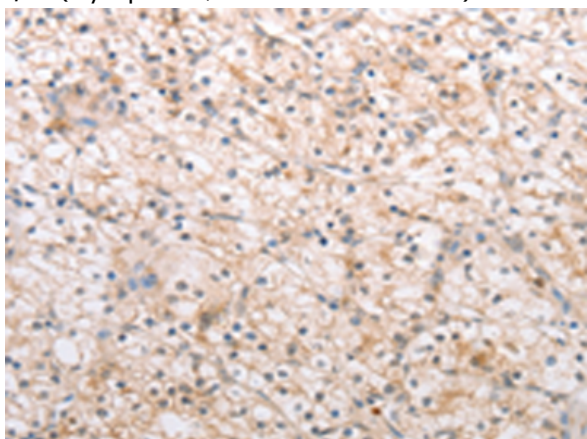
Storage & Shipping: Store at -20°C. Avoid repeated freezing and thawing



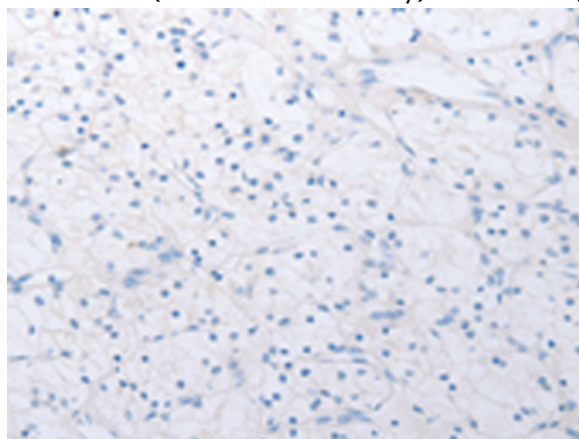
Immunohistochemistry analysis of paraffin embedded Human lung cancer tissue using 219922(MMP11 Antibody) at a dilution of 1/40(Cytoplasm, ExtraCellular matrix).



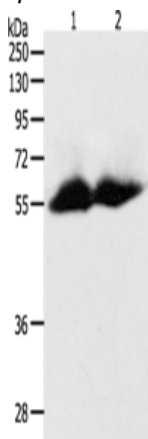
In comparison with the IHC on the left, the same paraffin-embedded Human lung cancer tissue is first treated with the synthetic peptide and then with 219922(Anti-MMP11 Antibody) at dilution 1/40.



The image on the left is immunohistochemistry of paraffin-embedded Human renal cancer tissue using 219922(Anti-MMP11 Antibody) at a dilution of 1/40.



In comparison with the IHC on the left, the same paraffin-embedded Human renal cancer tissue is first treated with synthetic peptide and then with D260628(Anti-MMP11 Antibody) at dilution 1/40.



Gel: 10%SDS-PAGE, Lysate: 60 µg;
Lane 1-2: Human colon tissue, Human ovarian cancer tissue;
Primary antibody: 219922(MMP11 Antibody) at dilution 1/600;
Secondary antibody: Goat anti rabbit IgG at 1/8000 dilution;
Exposure time: 1 minute



Product Description

Pioneering GTPase and Oncogene Product Development since 2010
