

## MLNR RABBIT PAB

**Cat.#:** S219928

**Product Name:** Anti-MLNR Rabbit Polyclonal Antibody

**Synonyms:** GPR38; MTLR1

**UNIPROT ID:** O43193 (Gene Accession - NP\_001498 )

**Background:** Motilin is a 22 amino acid peptide hormone expressed throughout the gastrointestinal (GI) tract. The protein encoded by this gene is a motilin receptor which is a member of the G-protein coupled receptor 1 family. This member is a multi-pass transmembrane protein, and is an important therapeutic target for the treatment of hypomotility disorders.

**Immunogen:** Synthetic peptide of human MLNR

**Applications:** ELISA, WB, IHC

**Recommended Dilutions:** IHC: 30-150;WB: 500-2000;ELISA: 5000-10000

**Host Species:** Rabbit

**Clonality:** Rabbit Polyclonal

**Isotype:** Immunogen-specific rabbit IgG

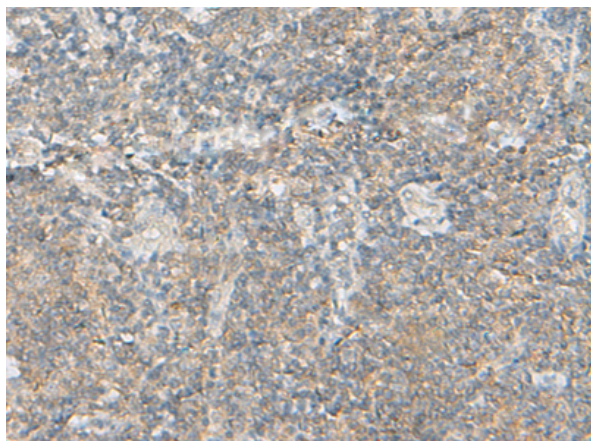
**Purification:** Antigen affinity purification

**Species Reactivity:** Human

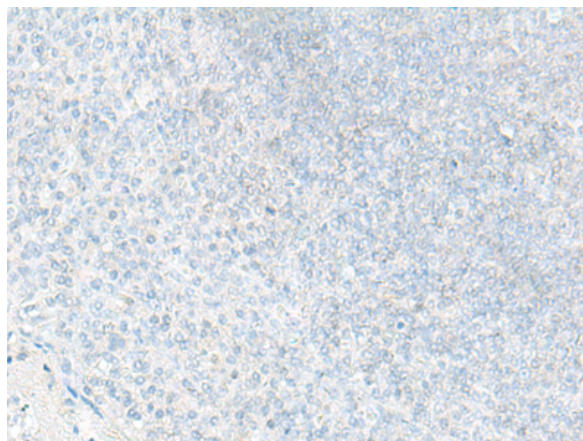
**Constituents:** PBS (without Mg<sup>2+</sup> and Ca<sup>2+</sup>), pH 7.4, 150 mM NaCl, 0.05% Sodium Azide and 40% glycerol

**Research Areas:** Signal Transduction, Neuroscience

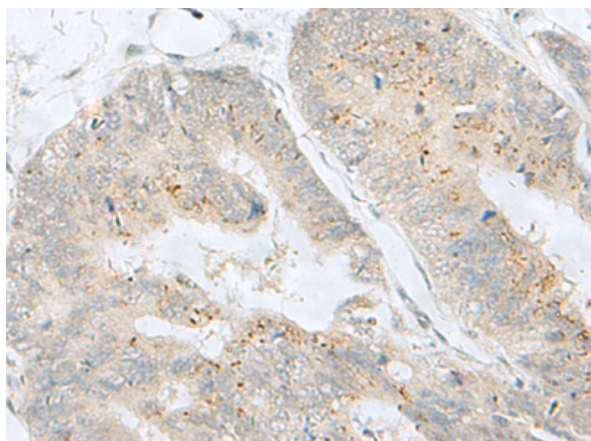
**Storage & Shipping:** Store at -20°C. Avoid repeated freezing and thawing



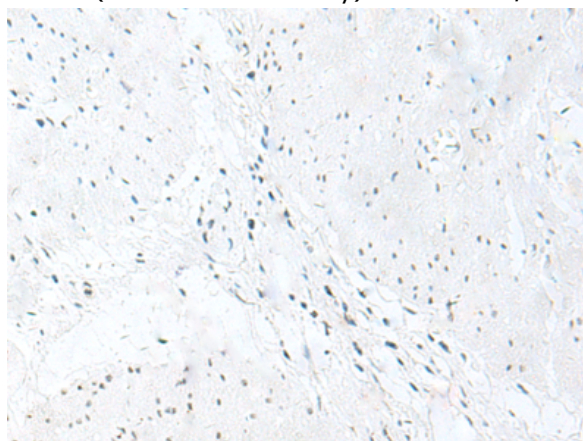
Immunohistochemistry analysis of paraffin embedded Human tonsil tissue using 219928(MLNR Antibody) at a dilution of 1/35(Cell membrane).



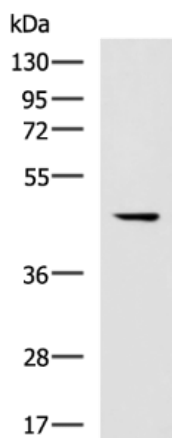
In comparison with the IHC on the left, the same paraffin-embedded Human tonsil tissue is first treated with the synthetic peptide and then with 219928(Anti-MLNR Antibody) at dilution 1/35.



The image on the left is immunohistochemistry of paraffin-embedded Human colorectal cancer tissue using 219928(Anti-MLNR Antibody) at a dilution of 1/35.



In comparison with the IHC on the left, the same paraffin-embedded Human colorectal cancer tissue is first treated with synthetic peptide and then with D260639(Anti-MLNR Antibody) at dilution 1/35.



Gel: 8%SDS-PAGE, Lysate: 40 µg;  
Lane: 293T cell lysate;  
Primary antibody: 219928(MLNR Antibody) at dilution 1/500;  
Secondary antibody: HRP-conjugated Goat anti rabbit IgG at 1/5000 dilution;  
Exposure time: 2 minutes



# Product Description

Pioneering GTPase and Oncogene Product Development since 2010

---