

## MLN RABBIT PAB

**Cat.#:** S216660

**Product Name:** Anti-MLN Rabbit Polyclonal Antibody

**Synonyms:**

**UNIPROT ID:** P12872 (Gene Accession - BC112314 )

**Background:** This gene encodes a small peptide hormone that is secreted by cells of the small intestine to regulate gastrointestinal contractions and motility. Proteolytic processing of the secreted protein produces the mature peptide and a byproduct referred to as motilin-associated peptide (MAP). Three transcript variants encoding different preproprotein isoforms but the same mature peptide have been found for this gene.

**Immunogen:** Fusion protein of human MLN

**Applications:** ELISA, IHC

**Recommended Dilutions:** IHC: 50-100; ELISA: 5000-10000

**Host Species:** Rabbit

**Clonality:** Rabbit Polyclonal

**Isotype:** Immunogen-specific rabbit IgG

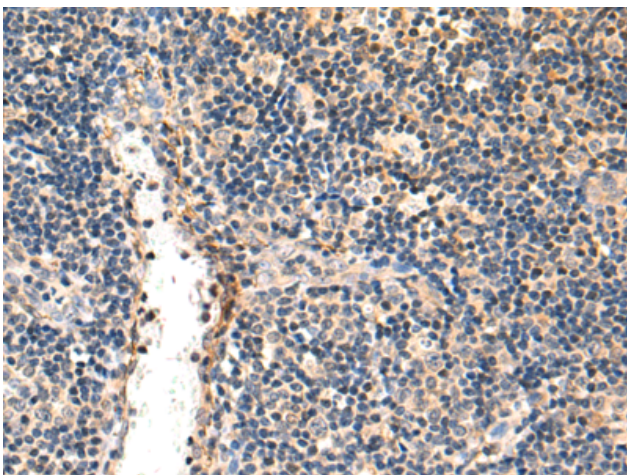
**Purification:** Antigen affinity purification

**Species Reactivity:** Human

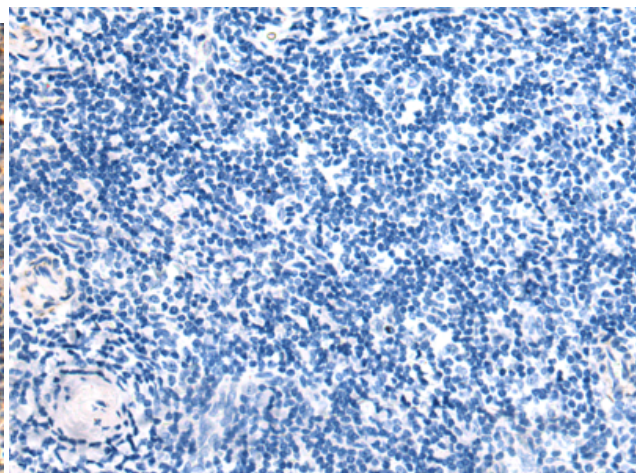
**Constituents:** PBS (without Mg<sup>2+</sup> and Ca<sup>2+</sup>), pH 7.4, 150 mM NaCl, 0.05% Sodium Azide and 40% glycerol

**Research Areas:** Signal Transduction

**Storage & Shipping:** Store at -20°C. Avoid repeated freezing and thawing



Immunohistochemistry analysis of paraffin embedded Human tonsil tissue using 216660(MLN Antibody) at a dilution of 1/75(Secreted).



In comparison with the IHC on the left, the same paraffin-embedded Human tonsil tissue is first treated with the fusion protein and then with 216660(Anti-MLN Antibody) at dilution 1/75.