

MLH1 (4C1) MOUSE MAB

Cat.#: N261176

Product Name: Anti-MLH1 (4C1) Mouse Monoclonal Antibody

Synonyms: MLH1; COCA2; DNA mismatch repair protein Mlh1; MutL protein homolog 1

UNIPROT ID: P40692

Background: This gene was identified as a locus frequently mutated in hereditary nonpolyposis colon cancer (HNPCC). It is a human homolog of the E. coli DNA mismatch repair gene mutL, consistent with the characteristic alterations in microsatellite sequences (RER+ phenotype) found in HNPCC. Alternatively spliced transcript variants encoding different isoforms have been described, but their full-length natures have not been determined.

Immunogen: Purified recombinant fragment of MLH1 (aa381-483) expressed in E. Coli.

Applications: WB, ICC/IF

Recommended Dilutions: WB: 1/500-1/1000 IF: 1/50-1/200

Host Species: Mouse

Clonality: Mouse Monoclonal

Clone ID: 4C1-D9-C7

MW: Calculated MW: 85 kDa; Observed MW: 85 kDa

Isotype: IgG1

Purification: Ascitic Fluid

Species Reactivity: Human, Monkey

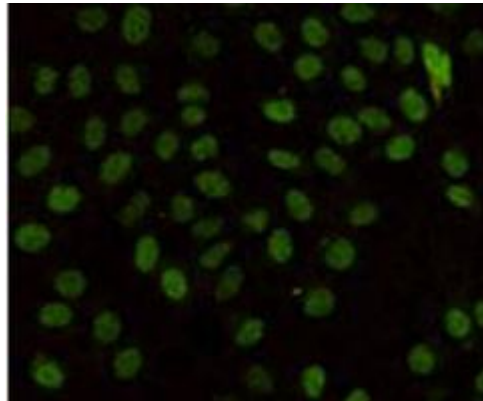
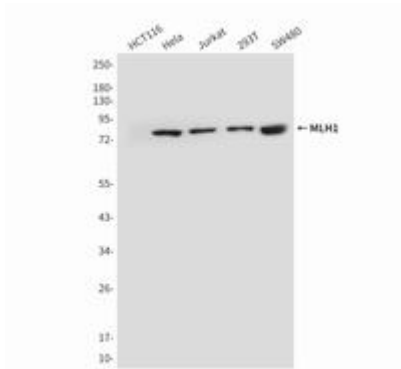
Conjugation: Unconjugated

Modification: Unmodified

Constituents: PBS (without Mg²⁺ and Ca²⁺), pH 7.3 containing 50% glycerol, 0.5% BSA and 0.02% sodium azide

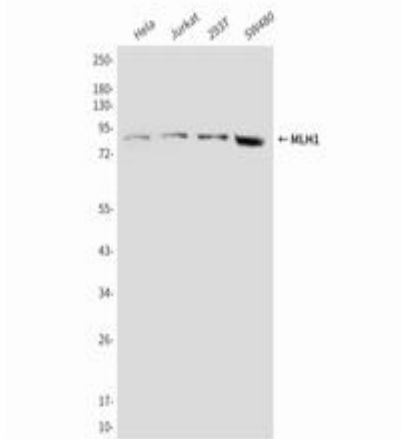
Research Areas: Epigenetics and Nuclear Signaling

Storage & Shipping: Store at -20°C. Avoid repeated freezing and thawing



Western blot analysis of MLH1 (4C1) in SW48, 293T, Jurkat and HeLa lysates using MLH1 (4C1) antibody

Immunocytochemistry analysis of MLH1 (4C1) in HeLa cells using MLH1 (4C1) antibody.



Western blot analysis of MLH1 (4C1) in HeLa, Jurkat, 293T and SW480 lysates using MLH1 (4C1) antibody