

MLF1 RABBIT PAB

Cat.#: S223565

Product Name: Anti-MLF1 Rabbit Polyclonal Antibody

Synonyms:

UNIPROT ID: P58340 (Gene Accession - BC007045)

Background: This gene encodes an oncoprotein which is thought to play a role in the phenotypic determination of hemopoetic cells. Translocations between this gene and nucleophosmin have been associated with myelodysplastic syndrome and acute myeloid leukemia. Multiple transcript variants encoding different isoforms have been found for this gene.

Immunogen: Fusion protein of human MLF1

Applications: ELISA, WB

Recommended Dilutions: WB: 500-2000;ELISA: 5000-10000

Host Species: Rabbit

Clonality: Rabbit Polyclonal

Isotype: Immunogen-specific rabbit IgG

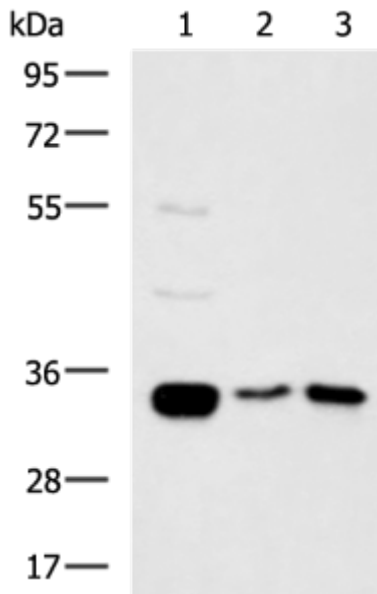
Purification: Antigen affinity purification

Species Reactivity: Human, Mouse

Constituents: PBS (without Mg²⁺ and Ca²⁺), pH 7.4, 150 mM NaCl, 0.05% Sodium Azide and 40% glycerol

Research Areas: Cancer, Cardiovascular, Stem Cells

Storage & Shipping: Store at -20°C. Avoid repeated freezing and thawing



Gel: 8%SDS-PAGE, Lysate: 40 μ g;

Lane 1-3: Mouse heart tissue, Human cerebrum tissue, Human cerebella tissue lysates ;

Primary antibody: 223565(MLF1 Antibody) at dilution 1/800;

Secondary antibody: HRP-conjugated Goat anti rabbit IgG at 1/5000 dilution;

Exposure time: 2 minutes